

# TUBE AXIAL

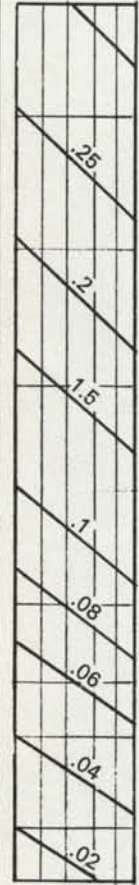
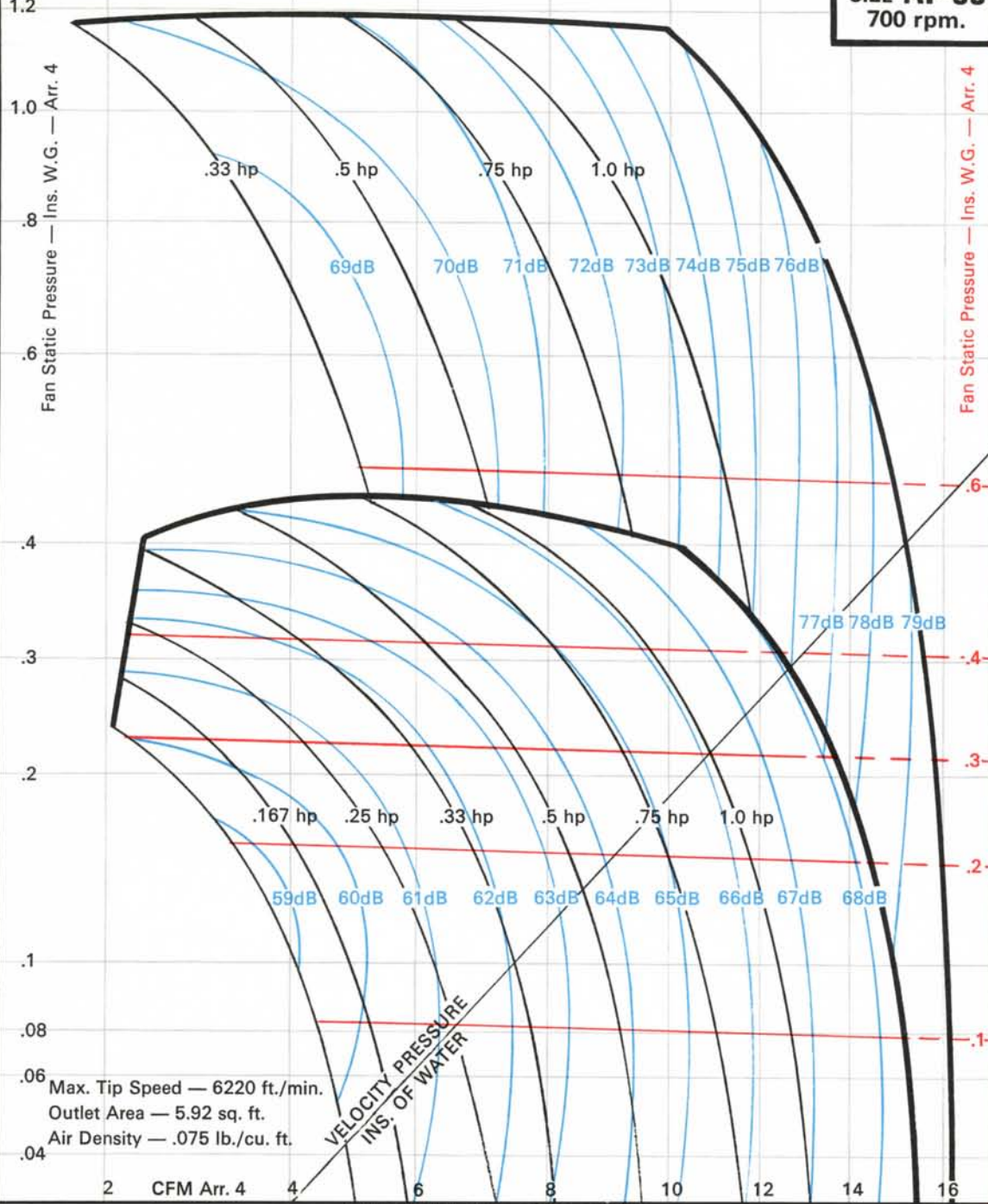
Belt Driven Fan — Arr. 9  
 Static Pressure — Ins. W.G.  
 (Applies to Single Stage Only)

SP Regain using Outlet Cone — Ins. wg. .01 .02 .04 .06 .08 .1

**SIZE AF-33**  
 700 rpm.

# VANE AXIAL

Belt Driven Fan — Arr. 9  
 Static Pressure — Ins. W.G.  
 (Applies to Single Stage Only)



600 rpm  
 620 rpm  
 640 rpm  
 660 rpm  
 680 rpm  
 700 rpm

700 rpm  
 680 rpm  
 660 rpm  
 640 rpm  
 620 rpm  
 600 rpm

**TABLE 1** HP/SPEED CORRECTION CHART

HP	600	620	640	660	680	700
CFM Arr. 9	0.25	0.5	1.0	1.5	2.0	

**TABLE 2** Sound Level Correction for Speed

Speed (rpm)	700	680	660	640	620	600
dB	0	-1	-1	-2	-3	-4

The performance chart has been arranged to provide ratings for both Direct-driven and Belt driven, Tube and Vaneaxial fans. For details of a sample selection method refer to page 6.  
 NB: Belt Driven Ratings Corrected for Belt Guard Losses  
 The range of performance is obtained by variations in number of blades and blade angle, the actual values of which are chosen by our Sales office on receipt of a specific duty.  
 The fan horsepower contours relate to the HP taken by each impeller, and for contra-rotating fans shown in the upper envelope give the maximum HP taken by each stage. The contours of sound level relate to the average Sound Pressure Level (Lp) in dB, re .0002 dynes/cm<sup>2</sup>. The corresponding Sound Power Level (Lw) re 10<sup>-12</sup> watts is 19 dB higher.

**TABLE 3**

Octave Band Mid frequency	cps	63	125	250	500	1000	2000	4000	8000
Spectrum	dB	-6	-5	-6	-7	-9	-12	-20	-26

# TUBE AXIAL

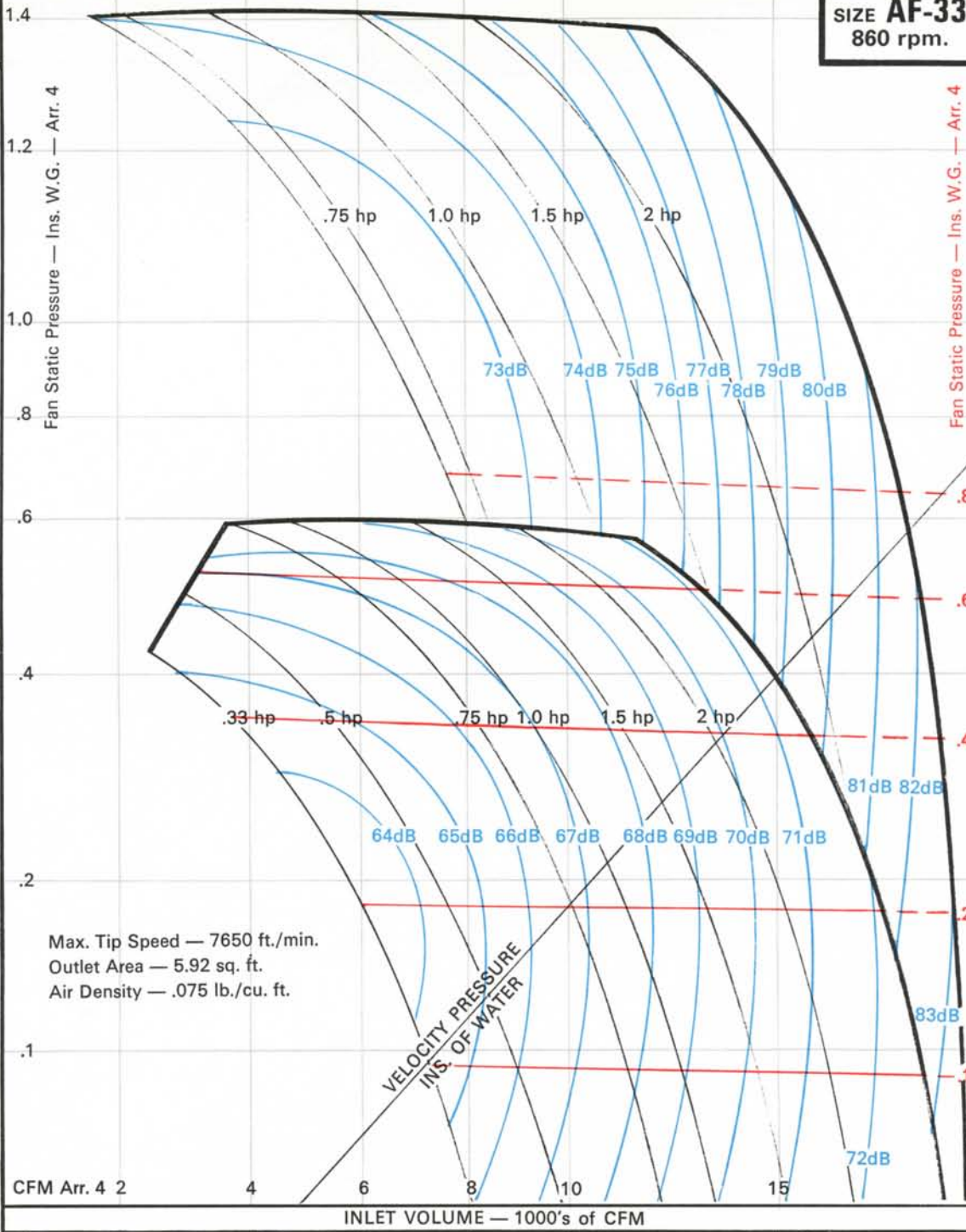
Belt Driven Fan — Arr. 9  
Static Pressure — Ins. W.G.  
(Applies to Single Stage Only)

SP Regain using Outlet Cone — Ins. wg. .02 .04 .06 .08 .1 .12 .14 .16

**SIZE AF-33**  
860 rpm.

# VANE AXIAL

Belt Driven Fan — Arr. 9  
Static Pressure — Ins. W.G.  
(Applies to Single Stage Only)



Max. Tip Speed — 7650 ft./min.  
Outlet Area — 5.92 sq. ft.  
Air Density — .075 lb./cu. ft.

VELOCITY PRESSURE  
INS. OF WATER



710 rpm  
740 rpm  
770 rpm  
800 rpm  
830 rpm  
860 rpm

CFM Arr. 4  
2  
4  
6  
8  
10  
15

860 rpm  
830 rpm  
800 rpm  
770 rpm  
740 rpm  
710 rpm



860 rpm  
830 rpm  
800 rpm  
770 rpm  
740 rpm  
710 rpm

TABLE 1 HP/SPEED CORRECTION CHART

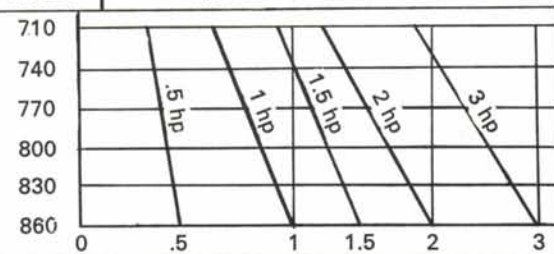


TABLE 2

Sound Level Correction for Speed	860	830	800	770	740	710
dB	0	-1	-1	-2	-3	-4

The performance chart has been arranged to provide ratings for both Direct-driven and Belt driven, Tube and Vaneaxial fans. For details of a sample selection method refer to page 6.

NB: Belt Driven Ratings Corrected for Belt Guard Losses

The range of performance is obtained by variations in number of blades and blade angle, the actual values of which are chosen by our Sales office on receipt of a specific duty.

The fan horsepower contours relate to the HP taken by each impeller, and for contra-rotating fans shown in the upper envelope give the maximum HP taken by each stage. The contours of sound level relate to the average Sound Pressure Level (Lp) in dB, re .0002 dynes/cm<sup>2</sup>. The corresponding Sound Power Level (Lw) re 10<sup>-12</sup> watts is 19 dB higher.

TABLE 3

Octave Band Mid frequency	cps	63	125	250	500	1000	2000	4000	8000
Spectrum	dB	-6	-5	-6	-7	-9	-12	-20	-26

# TUBE AXIAL

SP Regain using Outlet Cone — Ins. wg.

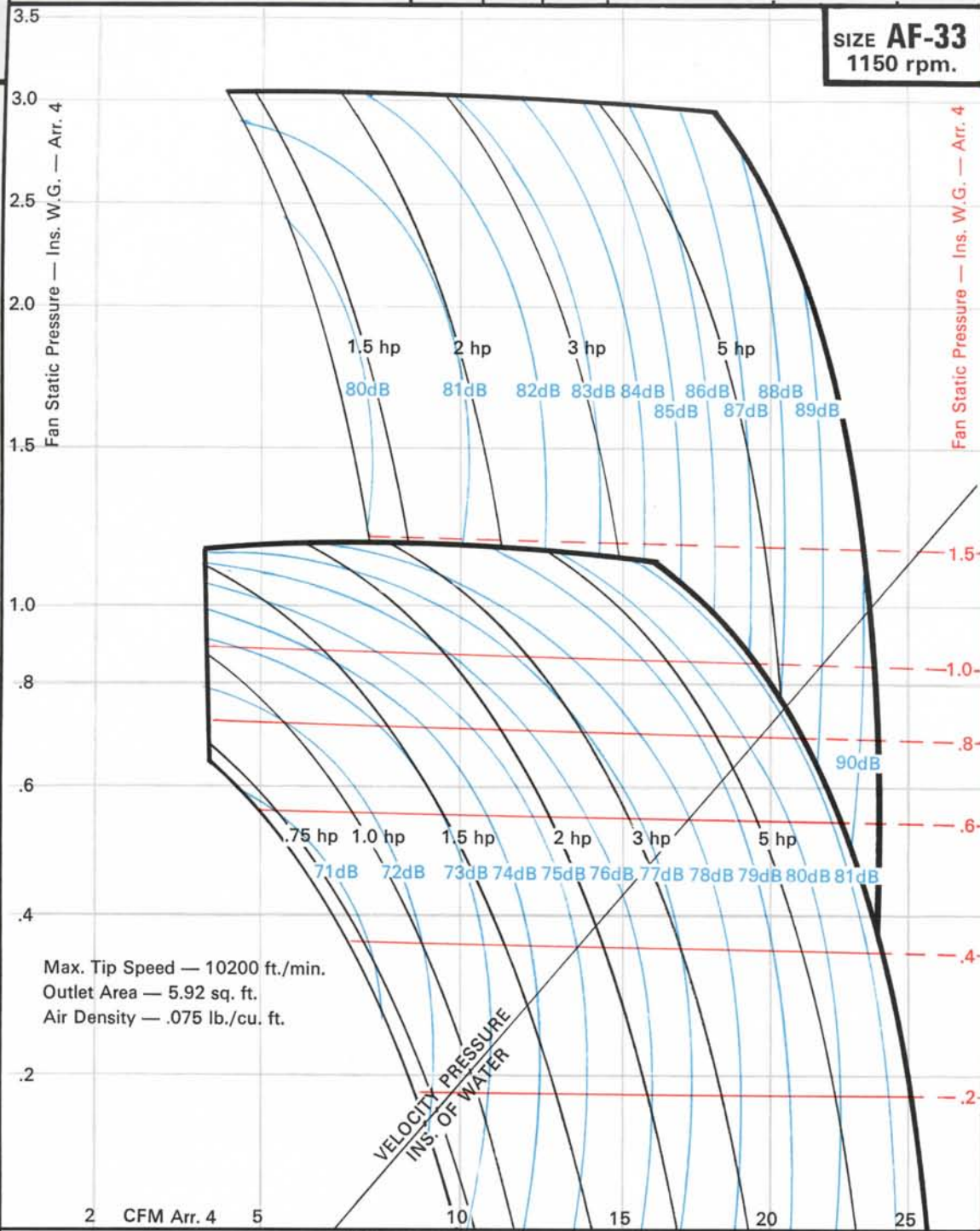
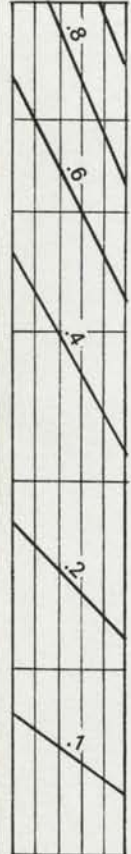
.04 .06 .08 .1 .2 .3

SIZE **AF-33**  
1150 rpm.

# VANE AXIAL

Belt Driven Fan — Arr. 9  
Static Pressure — Ins. W.G.  
(Applies to Single Stage Only)

Belt Driven Fan — Arr. 9  
Static Pressure — Ins. W.G.  
(Applies to Single Stage Only)



Max. Tip Speed — 10200 ft./min.  
Outlet Area — 5.92 sq. ft.  
Air Density — .075 lb./cu. ft.

VELOCITY PRESSURE  
INS. OF WATER

900 rpm  
950 rpm  
1000 rpm  
1050 rpm  
1100 rpm  
1150 rpm

1150 rpm  
1100 rpm  
1050 rpm  
1000 rpm  
950 rpm  
900 rpm

**TABLE 1** HP/SPEED CORRECTION CHART

	900	950	1000	1050	1100	1150
1 hp	1.0	1.1	1.2	1.3	1.4	1.5
2 hp	2.0	2.2	2.4	2.6	2.8	3.0
4 hp	4.0	4.4	4.8	5.2	5.6	6.0
6 hp	6.0	6.6	7.2	7.8	8.4	9.0
8 hp	8.0	8.8	9.6	10.4	11.2	12.0

**TABLE 2**

Sound Level Correction for Speed	1150	1100	1050	1000	950	900
dB	0	-1	-2	-3	-4	-5

The performance chart has been arranged to provide ratings for both Direct-driven and Belt driven, Tube and Vaneaxial fans. For details of a sample selection method refer to page 6.  
NB: Belt Driven Ratings Corrected for Belt Guard Losses  
The range of performance is obtained by variations in number of blades and blade angle, the actual values of which are chosen by our Sales office on receipt of a specific duty.  
The fan horsepower contours relate to the HP taken by each impeller, and for contra-rotating fans shown in the upper envelope give the maximum HP taken by each stage. The contours of sound level relate to the average Sound Pressure Level (Lp) in dB, re .0002 dynes/cm<sup>2</sup>. The corresponding Sound Power Level (Lw) re 10<sup>-12</sup> watts is 19 dB higher.

**TABLE 3**

Octave Band Mid frequency	cps	63	125	250	500	1000	2000	4000	8000
Spectrum	dB	-7	-6	-6	-7	-8	-12	-18	-24

# TUBE AXIAL

Belt Driven Fan — Arr. 9  
Static Pressure — Ins. W.G.  
(Applies to Single Stage Only)

SP Regain using Outlet Cone — Ins. wg.

SIZE **AF-33**  
1750 rpm.

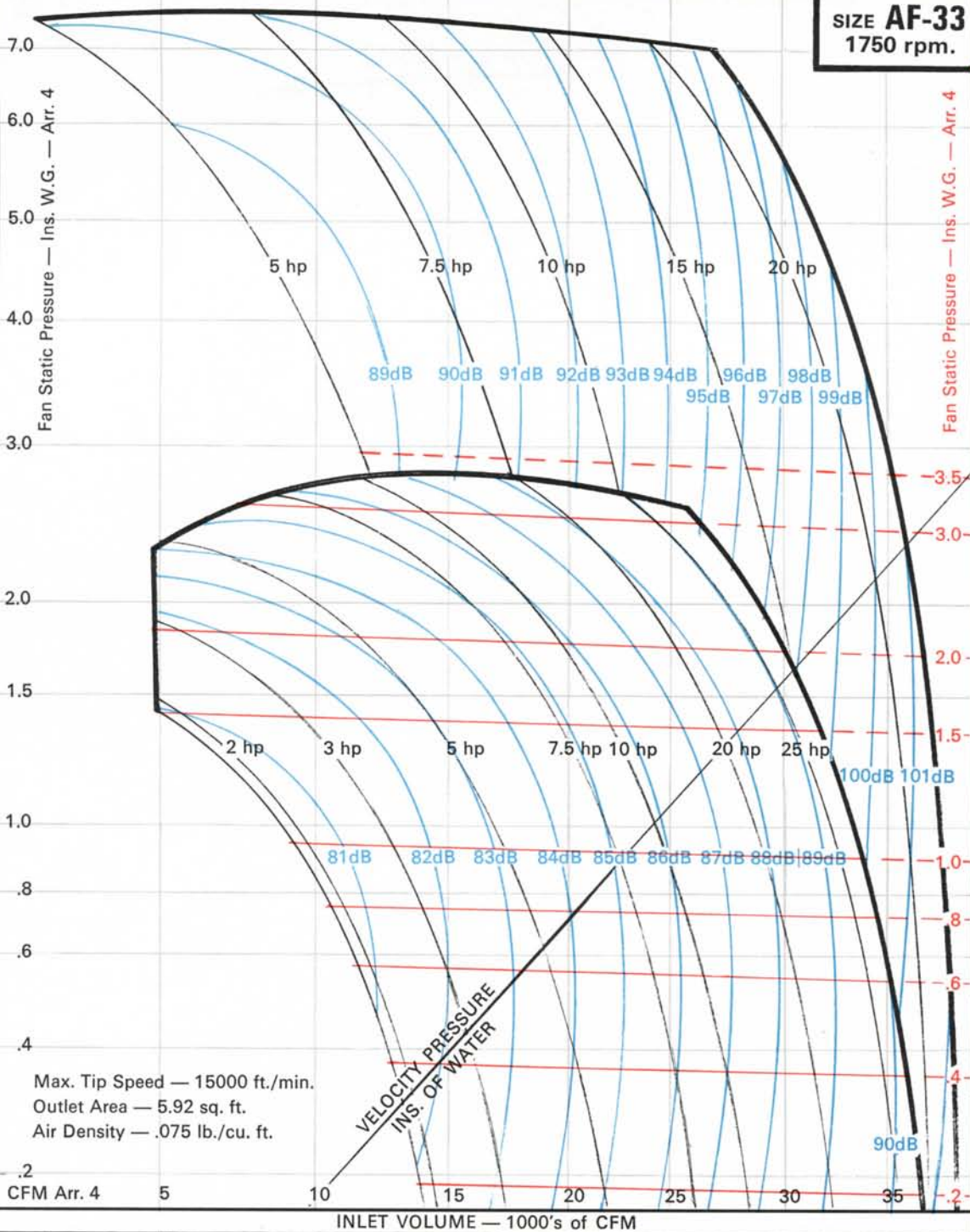
# VANE AXIAL

Belt Driven Fan — Arr. 9  
Static Pressure — Ins. W.G.  
(Applies to Single Stage Only)

1750 rpm  
1650 rpm  
1550 rpm  
1450 rpm  
1350 rpm  
1250 rpm

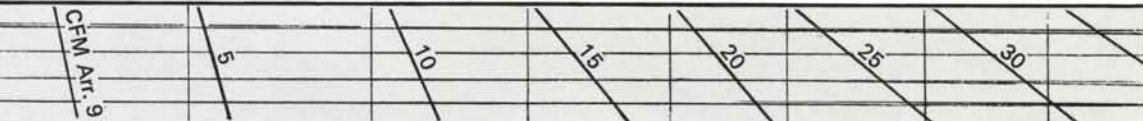


1250 rpm  
1350 rpm  
1450 rpm  
1550 rpm  
1650 rpm  
1750 rpm



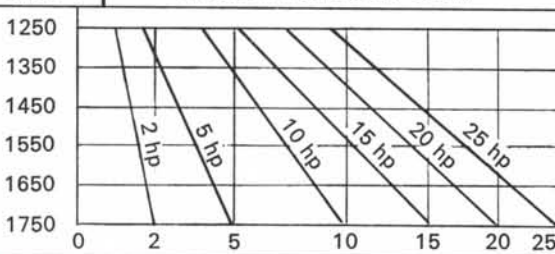
Max. Tip Speed — 15000 ft./min.  
Outlet Area — 5.92 sq. ft.  
Air Density — .075 lb./cu. ft.

INLET VOLUME — 1000's of CFM



1750 rpm  
1650 rpm  
1550 rpm  
1450 rpm  
1350 rpm  
1250 rpm

TABLE 1 HP/SPEED CORRECTION CHART



Sound Level Correction for Speed	1750	1650	1550	1450	1350	1250
dB	0	-1	-2	-4	-6	-8

The performance chart has been arranged to provide ratings for both Direct-driven and Belt driven, Tube and Vaneaxial fans. For details of a sample selection method refer to page 6.

NB: Belt Driven Ratings Corrected for Belt Guard Losses  
The range of performance is obtained by variations in number of blades and blade angle, the actual values of which are chosen by our Sales office on receipt of a specific duty.

The fan horsepower contours relate to the HP taken by each impeller, and for contra-rotating fans shown in the upper envelope give the maximum HP taken by each stage. The contours of sound level relate to the average Sound Pressure Level (Lp) in dB, re .0002 dynes/cm<sup>2</sup>. The corresponding Sound Power Level (Lw) re 10<sup>-12</sup> watts is 19 dB higher.

Octave Band Mid frequency	cps	63	125	250	500	1000	2000	4000	8000
Spectrum	dB	-12	-9	-6	-6	-7	-9	-15	-21

# TUBE AXIAL

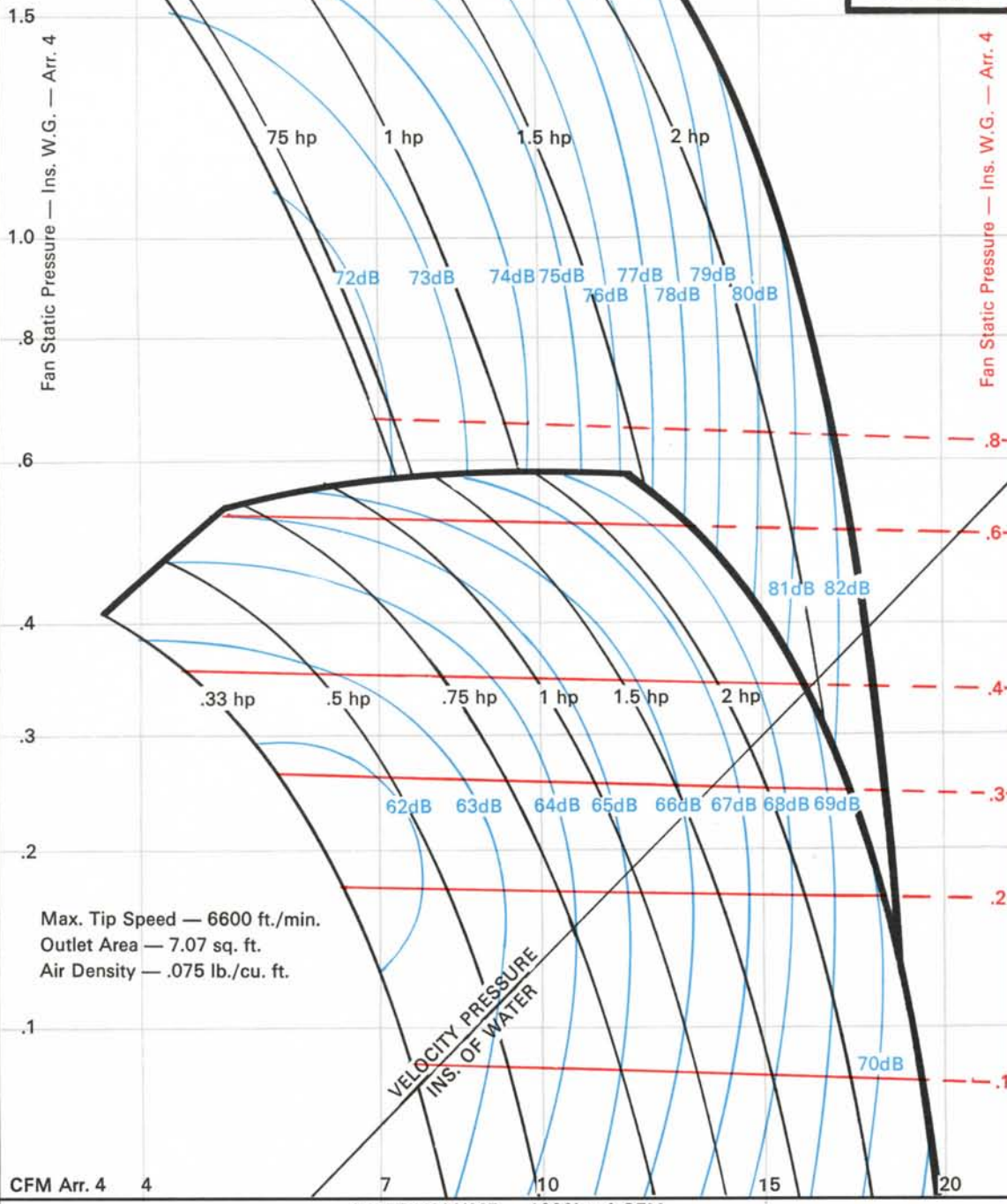
SP Regain using Outlet Cone — Ins. wg.

.02 .04 .06 .08 .1 .12 .14

SIZE **AF-36**  
700 rpm.

# VANE AXIAL

Belt Driven Fan — Arr. 9  
Static Pressure — Ins. W.G.  
(Applies to Single Stage Only)



Belt Driven Fan — Arr. 9  
Static Pressure — Ins. W.G.  
(Applies to Single Stage Only)

700 rpm  
680 rpm  
660 rpm  
640 rpm  
620 rpm  
600 rpm

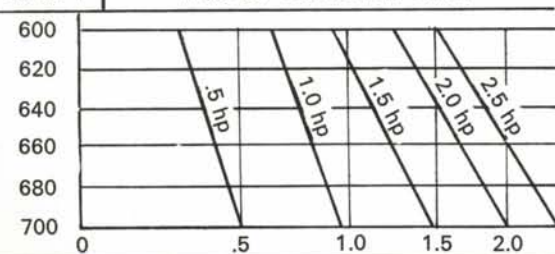


600 rpm  
620 rpm  
640 rpm  
660 rpm  
680 rpm  
700 rpm

CFM Arr. 9

700 rpm  
680 rpm  
660 rpm  
640 rpm  
620 rpm  
600 rpm

TABLE 1 HP/SPEED CORRECTION CHART



The performance chart has been arranged to provide ratings for both Direct-driven and Belt driven, Tube and Vaneaxial fans. For details of a sample selection method refer to page 6.

NB: Belt Driven Ratings Corrected for Belt Guard Losses

The range of performance is obtained by variations in number of blades and blade angle, the actual values of which are chosen by our Sales office on receipt of a specific duty.

The fan horsepower contours relate to the HP taken by each impeller, and for contra-rotating fans shown in the upper envelope give the maximum HP taken by each stage. The contours of sound level relate to the average Sound Pressure Level (Lp) in dB, re .0002 dynes/cm<sup>2</sup>. The corresponding Sound Power Level (Lw) re 10<sup>-12</sup> watts is 20 dB higher.

TABLE 2

Sound Level Correction for Speed	700	680	660	640	620	600
dB	0	-1	-1	-2	-3	-4

TABLE 3

Octave Band Mid frequency	cps	63	125	250	500	1000	2000	4000	8000
Spectrum	dB	-6	-5	-6	-7	-9	-12	-20	-26

# TUBE AXIAL

SP Regain using Outlet Cone — Ins. wg.

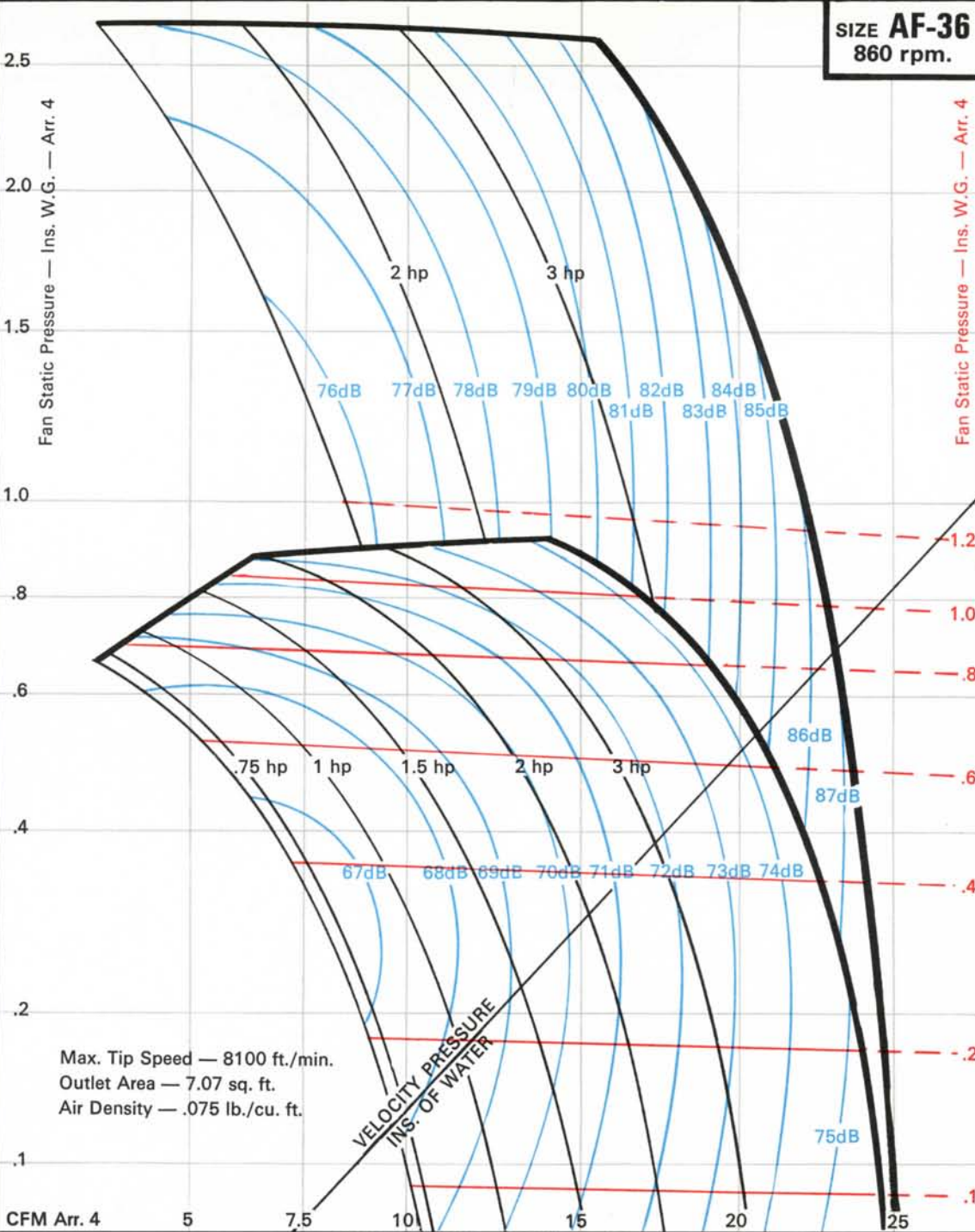
.04 .06 .08 .1 .2 .3

**SIZE AF-36**  
860 rpm.

# VANE AXIAL

Belt Driven Fan — Arr. 9  
Static Pressure — Ins. W.G.  
(Applies to Single Stage Only)

Belt Driven Fan — Arr. 9  
Static Pressure — Ins. W.G.  
(Applies to Single Stage Only)



Max. Tip Speed — 8100 ft./min.  
Outlet Area — 7.07 sq. ft.  
Air Density — .075 lb./cu. ft.

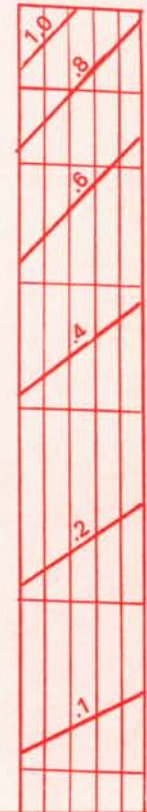
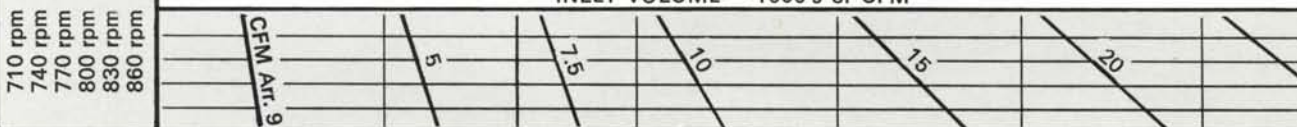
VELOCITY PRESSURE  
INS. OF WATER

CFM Arr. 4 5 7.5 10 15 20 25

INLET VOLUME — 1000's of CFM

710 rpm  
740 rpm  
770 rpm  
800 rpm  
830 rpm  
860 rpm

860 rpm  
830 rpm  
800 rpm  
770 rpm  
740 rpm  
710 rpm



860 rpm  
830 rpm  
800 rpm  
770 rpm  
740 rpm  
710 rpm

TABLE 1 HP/SPEED CORRECTION CHART

710				
740				
770				
800				
830				
860				
	0	1	2	3
		1 hp	2 hp	3 hp
				4 hp

TABLE 2

Sound Level Correction for Speed	860	830	800	770	740	710
dB	0	-1	-1	-2	-3	-4

The performance chart has been arranged to provide ratings for both Direct-driven and Belt driven, Tube and Vaneaxial fans. For details of a sample selection method refer to page 6.

NB: Belt Driven Ratings Corrected for Belt Guard Losses

The range of performance is obtained by variations in number of blades and blade angle, the actual values of which are chosen by our Sales office on receipt of a specific duty.

The fan horsepower contours relate to the HP taken by each impeller, and for contra-rotating fans shown in the upper envelope give the maximum HP taken by each stage. The contours of sound level relate to the average Sound Pressure Level (Lp) in dB, re .0002 dynes/cm<sup>2</sup>. The corresponding Sound Power Level (Lw) re 10<sup>-12</sup> watts is 20 dB higher.

TABLE 3

Octave Band Mid frequency	cps	63	125	250	500	1000	2000	4000	8000
Spectrum	dB	-6	-5	-6	-7	-9	-12	-20	-28

# TUBE AXIAL

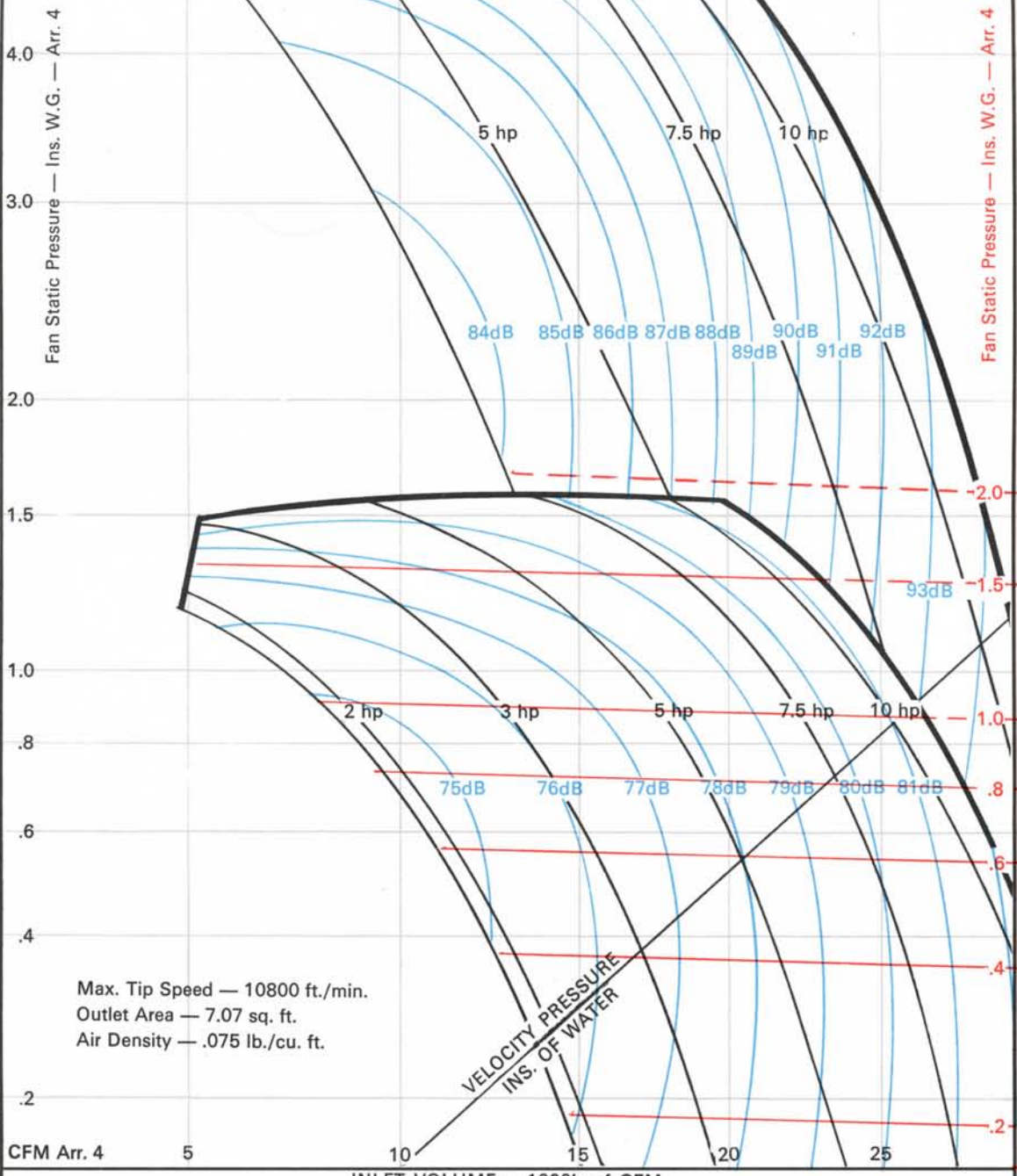
SP Regain using Outlet Cone — Ins. wg.

.04 .06 .08 .1 .2 .3

**SIZE AF-36**  
1150 rpm.

# VANE AXIAL

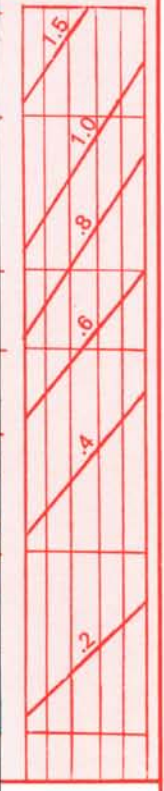
Belt Driven Fan — Arr. 9  
Static Pressure — Ins. W.G.  
(Applies to Single Stage Only)



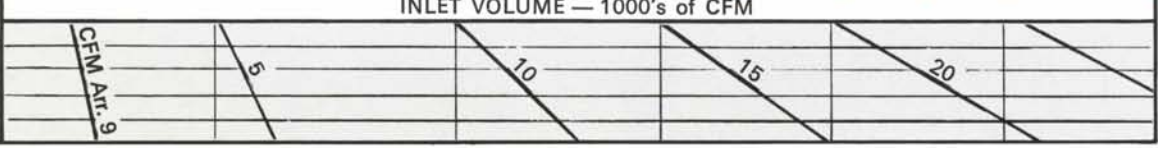
Max. Tip Speed — 10800 ft./min.  
Outlet Area — 7.07 sq. ft.  
Air Density — .075 lb./cu. ft.

Belt Driven Fan — Arr. 9  
Static Pressure — Ins. W.G.  
(Applies to Single Stage Only)

1150 rpm  
1100 rpm  
1050 rpm  
1000 rpm  
950 rpm  
900 rpm



900 rpm  
950 rpm  
1000 rpm  
1050 rpm  
1100 rpm  
1150 rpm



1150 rpm  
1100 rpm  
1050 rpm  
1000 rpm  
950 rpm  
900 rpm

TABLE 1 HP/SPEED CORRECTION CHART

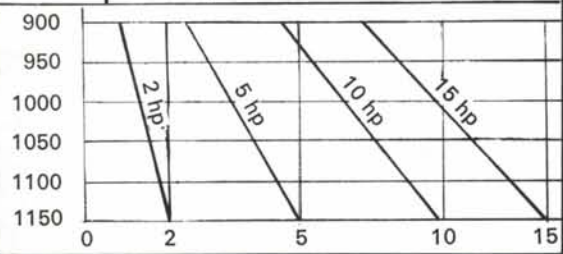


TABLE 2 Sound Level Correction for Speed

Sound Level Correction for Speed	1150	1100	1050	1000	950	900
dB	0	-1	-2	-3	-4	-5

The performance chart has been arranged to provide ratings for both Direct-driven and Belt driven, Tube and Vaneaxial fans. For details of a sample selection method refer to page 6.

NB: Belt Driven Ratings Corrected for Belt Guard Losses  
The range of performance is obtained by variations in number of blades and blade angle, the actual values of which are chosen by our Sales office on receipt of a specific duty.

The fan horsepower contours relate to the HP taken by each impeller, and for contra-rotating fans shown in the upper envelope give the maximum HP taken by each stage. The contours of sound level relate to the average Sound Pressure Level (Lp) in dB, re .0002 dynes/cm<sup>2</sup>. The corresponding Sound Power Level (Lw) re 10<sup>-12</sup> watts is 20 dB higher.

TABLE 3 Octave Band Mid frequency

Octave Band Mid frequency	cps	63	125	250	500	1000	2000	4000	8000
Spectrum	dB	-7	-6	-6	-7	-8	-12	-18	-24

# TUBE AXIAL

Belt Driven Fan — Arr. 9  
Static Pressure — Ins. W.G.  
(Applies to Single Stage Only)

SP Regain using Outlet Cone — Ins. wg.

**SIZE AF-36**  
1750 rpm.

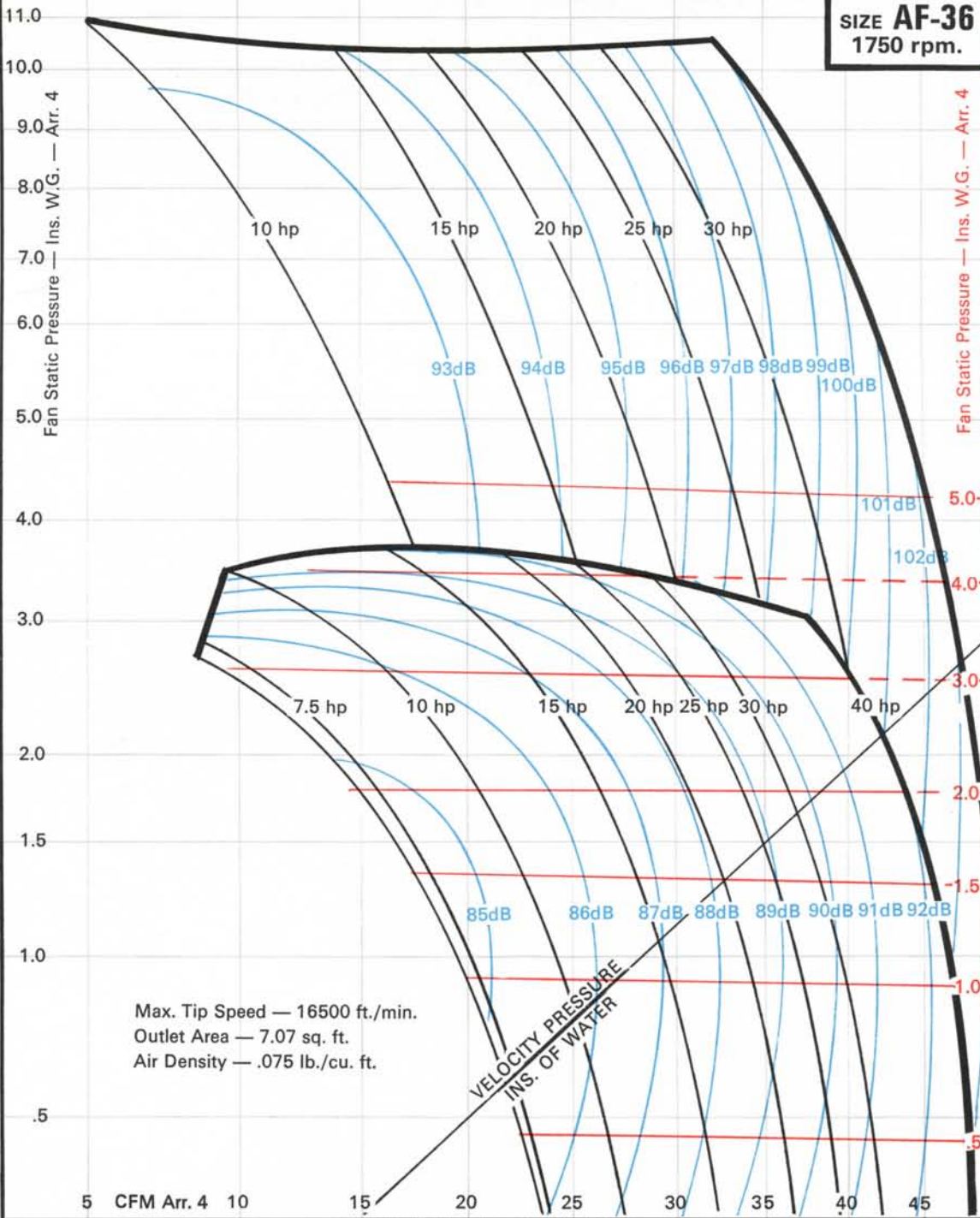
# VANE AXIAL

Belt Driven Fan — Arr. 9  
Static Pressure — Ins. W.G.  
(Applies to Single Stage Only)

1750 rpm  
1650 rpm  
1550 rpm  
1450 rpm  
1350 rpm  
1250 rpm



1250 rpm  
1350 rpm  
1450 rpm  
1550 rpm  
1650 rpm  
1750 rpm



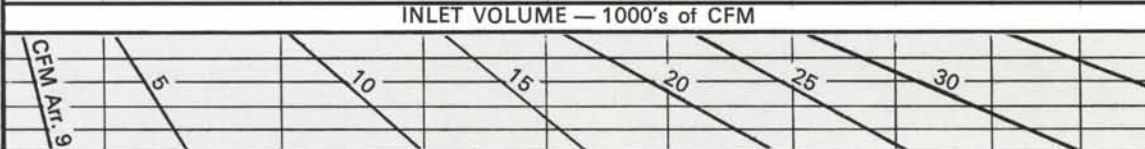
Max. Tip Speed — 16500 ft./min.  
Outlet Area — 7.07 sq. ft.  
Air Density — .075 lb./cu. ft.

VELOCITY PRESSURE  
INS. OF WATER

Fan Static Pressure — Ins. W.G. — Arr. 4



1750 rpm  
1650 rpm  
1550 rpm  
1450 rpm  
1350 rpm  
1250 rpm



CFM Arr. 9

TABLE 1 HP/SPEED CORRECTION CHART

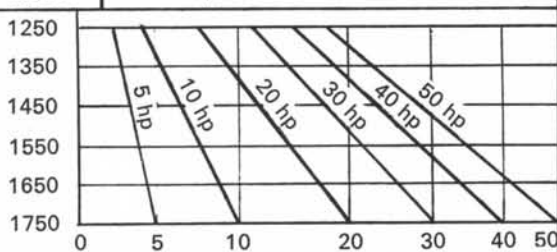


TABLE 2

Sound Level Correction for Speed	1750	1650	1550	1450	1350	1250
dB	0	-1	-2	-4	-6	-8

The performance chart has been arranged to provide ratings for both Direct-driven and Belt driven, Tube and Vaneaxial fans. For details of a sample selection method refer to page 6.

NB: Belt Driven Ratings Corrected for Belt Guard Losses

The range of performance is obtained by variations in number of blades and blade angle, the actual values of which are chosen by our Sales office on receipt of a specific duty.

The fan horsepower contours relate to the HP taken by each impeller, and for contra-rotating fans shown in the upper envelope give the maximum HP taken by each stage. The contours of sound level relate to the average Sound Pressure Level (Lp) in dB, re .0002 dynes/cm<sup>2</sup>. The corresponding Sound Power Level (Lw) re 10<sup>-12</sup> watts is 20 dB higher.

TABLE 3

Octave Band Mid frequency	cps	63	125	250	500	1000	2000	4000	8000
Spectrum	dB	-12	-9	-6	-6	-7	-9	-15	-21



# TUBE AXIAL

SP Regain using Outlet Cone — Ins. wg.

.02 .04 .06 .08 .10 .12 .14

**SIZE A-38**  
700 rpm.

# VANE AXIAL

Belt Driven Fan — Arr. 9  
Static Pressure — Ins. W.G.  
(Applies to Single Stage Only)

Fan Static Pressure — Ins. W.G. — Arr. 4

Fan Static Pressure — Ins. W.G. — Arr. 4

Belt Driven Fan — Arr. 9  
Static Pressure — Ins. W.G.  
(Applies to Single Stage Only)

1.5  
1.0  
.5  
.25  
.1

Max. Tip Speed — 7000 ft./min.  
Outlet Area — 7.9 sq. ft.  
Air Density — 0.75 lb./cu. ft.

VELOCITY PRESSURE  
INS. OF WATER

CFM Arr. 4

INLET VOLUME — 1000's of CFM

5 10 15 20

600 rpm  
620 rpm  
640 rpm  
660 rpm  
680 rpm  
700 rpm

CFM Arr. 9

700 rpm  
680 rpm  
660 rpm  
640 rpm  
620 rpm  
600 rpm



700 rpm  
680 rpm  
660 rpm  
640 rpm  
620 rpm  
600 rpm

TABLE 1 HP/SPEED CORRECTION CHART

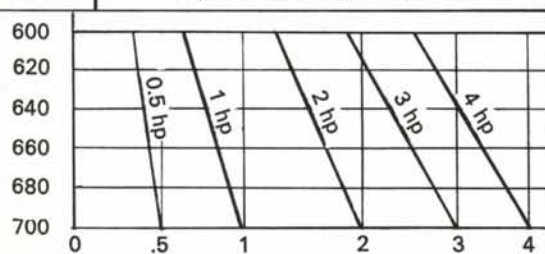


TABLE 2 Sound Level Correction for Speed

Sound Level Correction for Speed	700	680	660	640	620	600
dB	0	-1	-1	-2	-3	-4

The performance chart has been arranged to provide ratings for both Direct-driven and Belt driven, Tube and Vaneaxial fans. For details of a sample selection method refer to page 6.

NB: Belt Driven Ratings Corrected for Belt Guard Losses

The range of performance is obtained by variations in number of blades and blade angle, the actual values of which are chosen by our Sales office on receipt of a specific duty.

The fan horsepower contours relate to the HP taken by each impeller, and for contra-rotating fans shown in the upper envelope give the maximum HP taken by each stage. The contours of sound level relate to the average Sound Pressure Level (Lp) in dB, re .0002 dynes/cm<sup>2</sup>. The corresponding Sound Power Level (Lw) re 10<sup>-12</sup> watts is 21 dB higher.

TABLE 3

Octave Band Mid frequency	cps	63	125	250	500	1000	2000	4000	8000
Spectrum	dB	-6	-5	-6	-7	-9	-12	-20	-26

# TUBE AXIAL

Belt Driven Fan — Arr. 9  
Static Pressure — Ins. W.G.  
(Applies to Single Stage Only)

SP Regain using Outlet Cone — Ins. wg.

.05

.1

.2

.3

SIZE **A-38**  
860 rpm.

# VANE AXIAL

860 rpm Belt Driven Fan — Arr. 9  
830 rpm Static Pressure — Ins. W.G.  
800 rpm (Applies to Single Stage Only)

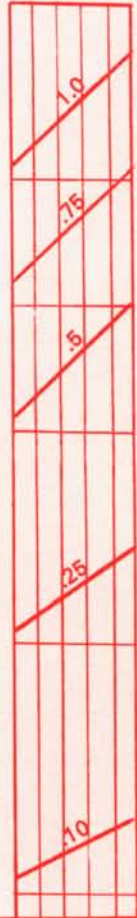
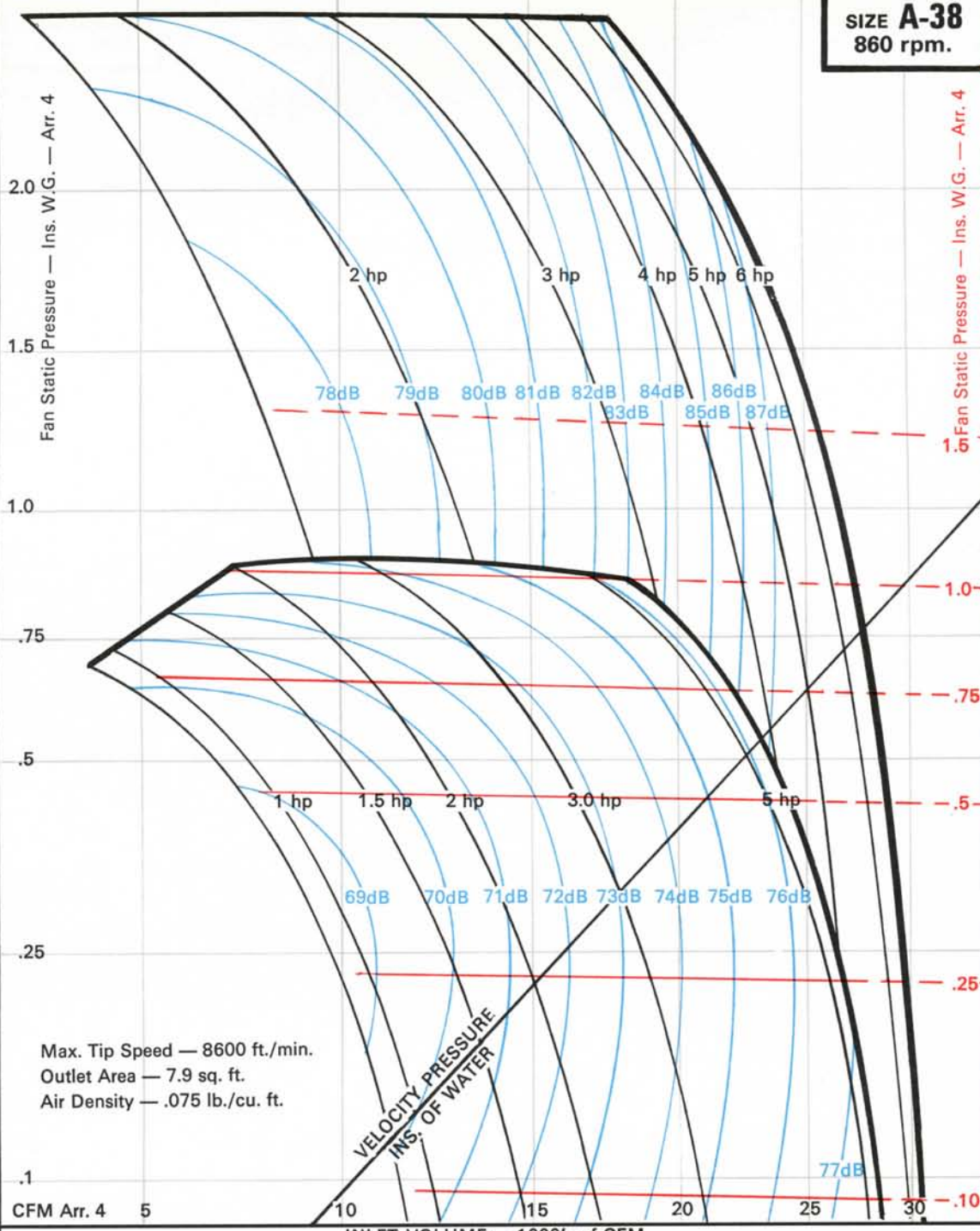


TABLE 1 HP/SPEED CORRECTION CHART

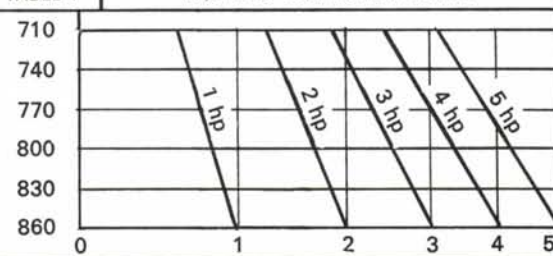


TABLE 2

Sound Level Correction for Speed	860	830	800	770	740	710
dB	0	-1	-1	-2	-3	-4

The performance chart has been arranged to provide ratings for both Direct-driven and Belt driven, Tube and Vaneaxial fans. For details of a sample selection method refer to page 6.

NB: Belt Driven Ratings Corrected for Belt Guard Losses  
The range of performance is obtained by variations in number of blades and blade angle, the actual values of which are chosen by our Sales office on receipt of a specific duty.

The fan horsepower contours relate to the HP taken by each impeller, and for contra-rotating fans shown in the upper envelope give the maximum HP taken by each stage. The contours of sound level relate to the average Sound Pressure Level (Lp) in dB, re .0002 dynes/cm<sup>2</sup>. The corresponding Sound Power Level (Lw) re 10<sup>-12</sup> watts is 21 dB higher.

TABLE 3

Octave Band Mid frequency	cps	63	125	250	500	1000	2000	4000	8000
Spectrum	dB	-6	-5	-6	-7	-9	-12	-20	-28

# TUBE AXIAL

SP Regain using Outlet Cone — Ins. wg.

.05

.1

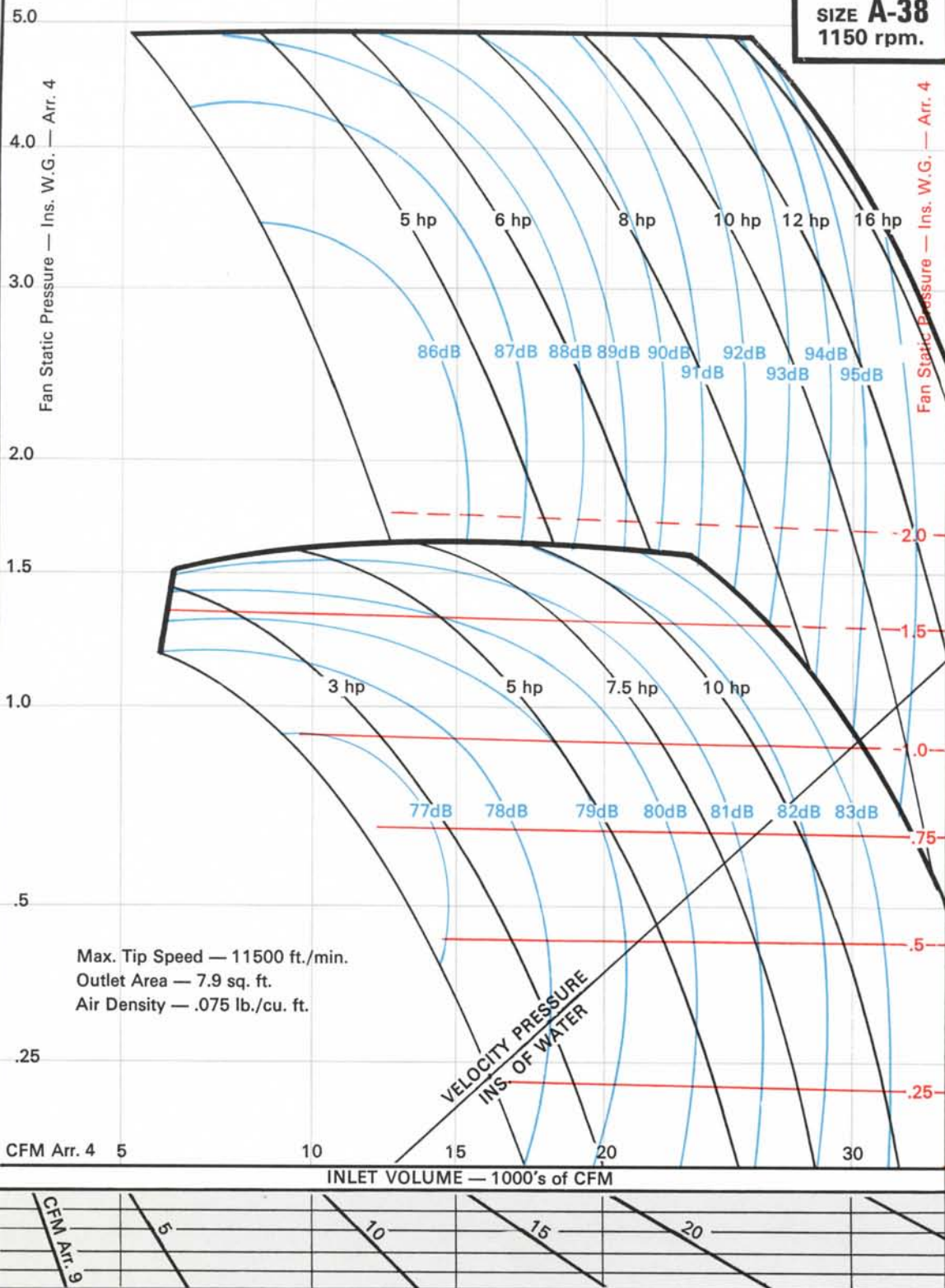
.2

.3

**SIZE A-38**  
1150 rpm.

# VANE AXIAL

Belt Driven Fan — Arr. 9  
Static Pressure — Ins. W.G.  
(Applies to Single Stage Only)

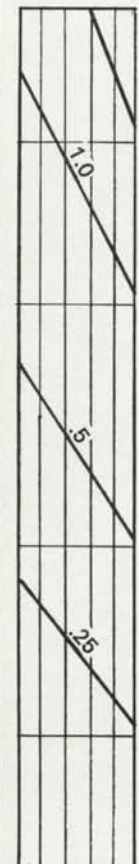


Belt Driven Fan — Arr. 9  
Static Pressure — Ins. W.G.  
(Applies to Single Stage Only)

1150 rpm  
1100 rpm  
1050 rpm  
1000 rpm  
950 rpm  
900 rpm



1150 rpm  
1100 rpm  
1050 rpm  
1000 rpm  
950 rpm  
900 rpm



900 rpm  
950 rpm  
1000 rpm  
1050 rpm  
1100 rpm  
1150 rpm

TABLE 1 HP/SPEED CORRECTION CHART

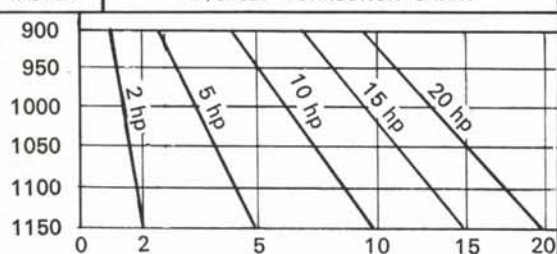


TABLE 2 Sound Level Correction for Speed

Speed	1150	1100	1050	1000	950	900
dB	0	-1	-2	-3	-4	-5

The performance chart has been arranged to provide ratings for both Direct-driven and Belt driven, Tube and Vaneaxial fans. For details of a sample selection method refer to page 6.

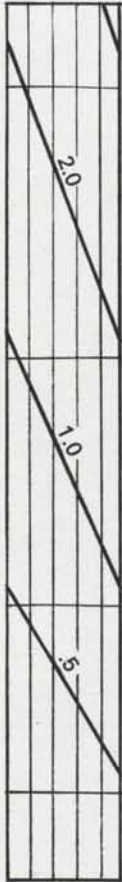
NB: Belt Driven Ratings Corrected for Belt Guard Losses  
The range of performance is obtained by variations in number of blades and blade angle, the actual values of which are chosen by our Sales office on receipt of a specific duty.  
The fan horsepower contours relate to the HP taken by each impeller, and for contra-rotating fans shown in the upper envelope give the maximum HP taken by each stage. The contours of sound level relate to the average Sound Pressure Level (Lp) in dB, re .0002 dynes/cm<sup>2</sup>. The corresponding Sound Power Level (Lw) re 10<sup>-12</sup> watts is 21 dB higher.

TABLE 3 Octave Band Mid frequency

Octave Band Mid frequency	cps	63	125	250	500	1000	2000	4000	8000
Spectrum	dB	-7	-6	-5	-7	-8	-12	-18	-25

# TUBE AXIAL

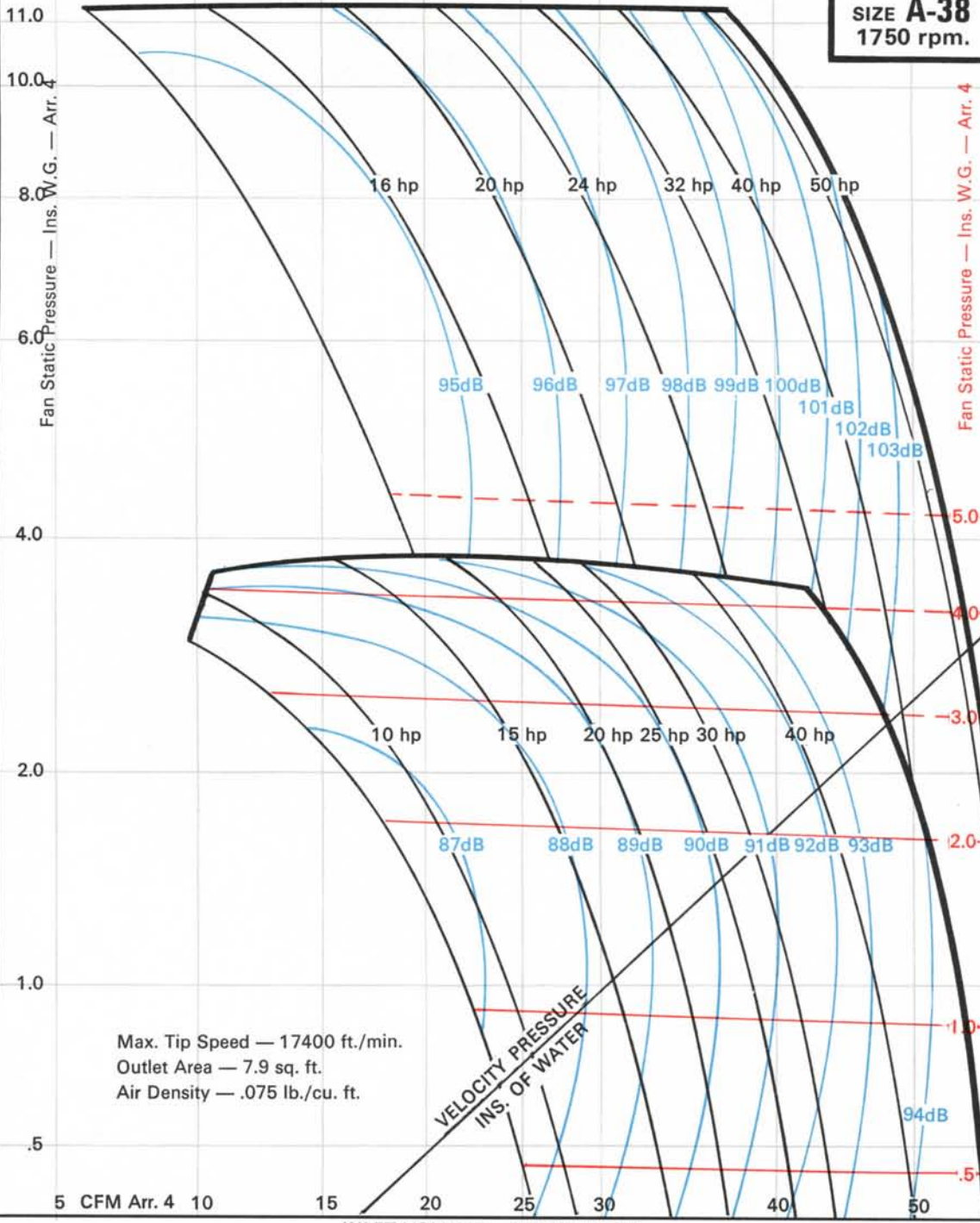
Belt Driven Fan — Arr. 9  
Static Pressure — Ins. W.G.  
(Applies to Single Stage Only)



1250 rpm  
1350 rpm  
1450 rpm  
1550 rpm  
1650 rpm  
1750 rpm

SP Regain using Outlet Cone — Ins. wg.

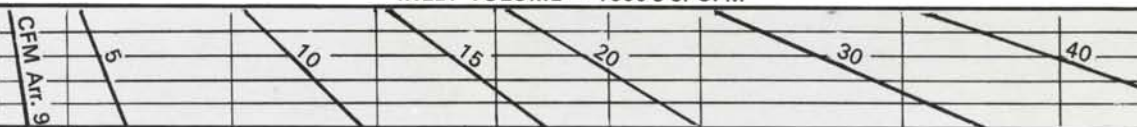
.1 .2 .3 .4 .5 .6 .7 .8



Max. Tip Speed — 17400 ft./min.  
Outlet Area — 7.9 sq. ft.  
Air Density — .075 lb./cu. ft.

VELOCITY PRESSURE  
INS. OF WATER

INLET VOLUME — 1000's of CFM



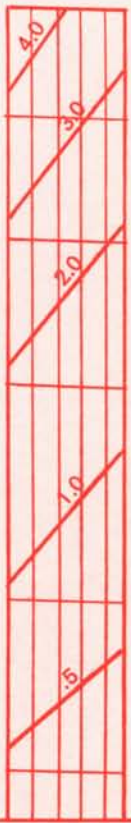
CFM Arr. 9

# VANE AXIAL

SIZE **A-38**  
1750 rpm.

Belt Driven Fan — Arr. 9  
Static Pressure — Ins. W.G.  
(Applies to Single Stage Only)

1750 rpm  
1650 rpm  
1550 rpm  
1450 rpm  
1350 rpm  
1250 rpm



**TABLE 1** HP/SPEED CORRECTION CHART

1250						
1350						
1450						
1550						
1650						
1750						
	0	10	20	30	40	
		10 hp	20 hp	30 hp	40 hp	50 hp

**TABLE 2**

Sound Level Correction for Speed	1750	1650	1550	1450	1350	1250
dB	0	-1	-2	-4	-6	-8

The performance chart has been arranged to provide ratings for both Direct-driven and Belt driven, Tube and Vaneaxial fans. For details of a sample selection method refer to page 6.

NB: Belt Driven Ratings Corrected for Belt Guard Losses  
The range of performance is obtained by variations in number of blades and blade angle, the actual values of which are chosen by our Sales office on receipt of a specific duty.

The fan horsepower contours relate to the HP taken by each impeller, and for contra-rotating fans shown in the upper envelope give the maximum HP taken by each stage. The contours of sound level relate to the average Sound Pressure Level (Lp) in dB, re .0002 dynes/cm<sup>2</sup>. The corresponding Sound Power Level (Lw) re 10<sup>-12</sup> watts is 21 dB higher.

**TABLE 3**

Octave Band Mid frequency	cps	63	125	250	500	1000	2000	4000	8000
Spectrum	dB	-8	-6	-5	-7	-8	-12	-18	-25

# TUBE AXIAL

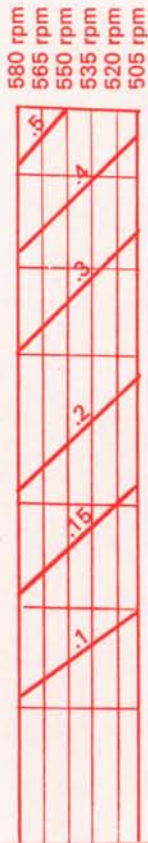
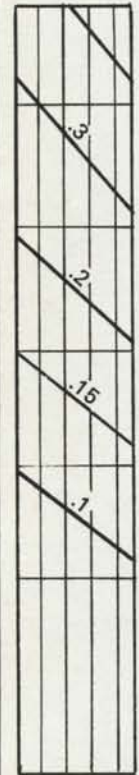
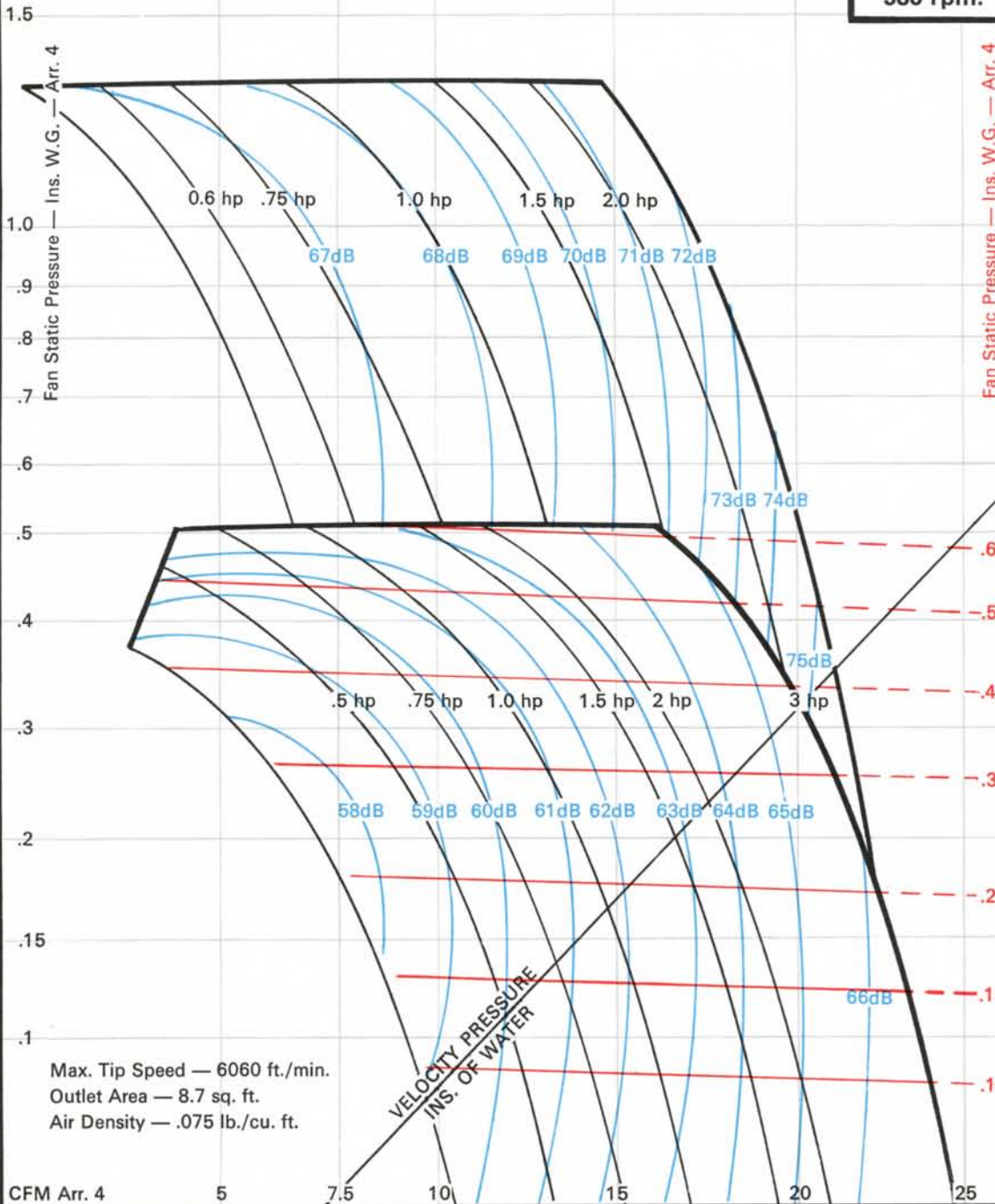
SP Regain using Outlet Cone — Ins. wg. .02 .04 .06 .08 .10 .15

SIZE **A-40**  
580 rpm.

# VANE AXIAL

Belt Driven Fan — Arr. 9  
Static Pressure — Ins. W.G.  
(Applies to Single Stage Only)

Belt Driven Fan — Arr. 9  
Static Pressure — Ins. W.G.  
(Applies to Single Stage Only)



505 rpm  
520 rpm  
535 rpm  
550 rpm  
565 rpm  
580 rpm

580 rpm  
565 rpm  
550 rpm  
535 rpm  
520 rpm  
505 rpm

**TABLE 1** HP/SPEED CORRECTION CHART

HP	505	520	535	550	565	580
5 hp	0.5	0.5	0.5	0.5	0.5	0.5
1 hp	1.0	1.0	1.0	1.0	1.0	1.0
2 hp	2.0	2.0	2.0	2.0	2.0	2.0
3 hp	3.0	3.0	3.0	3.0	3.0	3.0
4 hp	4.0	4.0	4.0	4.0	4.0	4.0

The performance chart has been arranged to provide ratings for both Direct-driven and Belt driven, Tube and Vaneaxial fans. For details of a sample selection method refer to page 6.  
NB: Belt Driven Ratings Corrected for Belt Guard Losses  
The range of performance is obtained by variations in number of blades and blade angle, the actual values of which are chosen by our Sales office on receipt of a specific duty.  
The fan horsepower contours relate to the HP taken by each impeller, and for contra-rotating fans shown in the upper envelope give the maximum HP taken by each stage. The contours of sound level relate to the average Sound Pressure Level (Lp) in dB, re .0002 dynes/cm<sup>2</sup>. The corresponding Sound Power Level (Lw) re 10<sup>-12</sup> watts is 21 dB higher.

**TABLE 2**

Sound Level Correction for Speed	580	565	550	535	520	505
dB	0	-1	-1	-2	-3	-3

**TABLE 3**

Octave Band Mid frequency	cps	63	125	250	500	1000	2000	4000	8000
Spectrum	dB	-8	-6	-5	-7	-8	-12	-18	-24

# TUBE AXIAL

Belt Driven Fan — Arr. 9  
Static Pressure — Ins. W.G.  
(Applies to Single Stage Only)

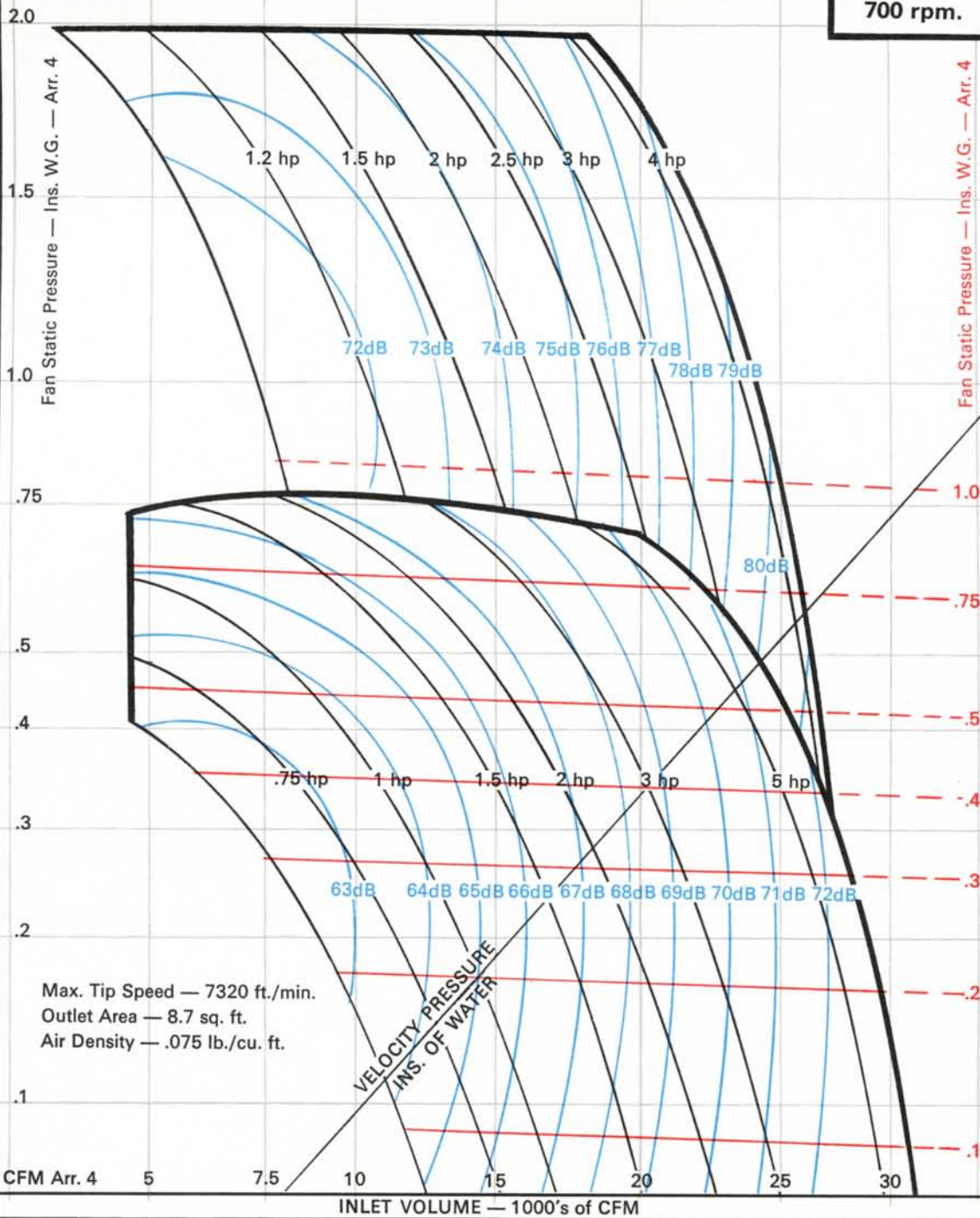
SP Regain using Outlet Cone — Ins. wg. .02 .04 .06 .08 .1 .15 .2

SIZE **A-40**  
700 rpm.

# VANE AXIAL

Belt Driven Fan — Arr. 9  
Static Pressure — Ins. W.G.  
(Applies to Single Stage Only)

700 rpm  
680 rpm  
660 rpm  
640 rpm  
620 rpm  
600 rpm



Max. Tip Speed — 7320 ft./min.  
Outlet Area — 8.7 sq. ft.  
Air Density — .075 lb./cu. ft.

VELOCITY PRESSURE  
INS. OF WATER



600 rpm  
620 rpm  
640 rpm  
660 rpm  
680 rpm  
700 rpm

700 rpm  
680 rpm  
660 rpm  
640 rpm  
620 rpm  
600 rpm

TABLE 1 HP/SPEED CORRECTION CHART

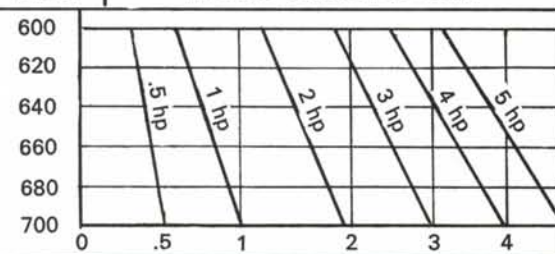


TABLE 2

Sound Level Correction for Speed	700	680	660	640	620	600
dB	0	-1	-1	-2	-3	-4

The performance chart has been arranged to provide ratings for both Direct-driven and Belt driven, Tube and Vaneaxial fans. For details of a sample selection method refer to page 6.

NB: Belt Driven Ratings Corrected for Belt Guard Losses  
The range of performance is obtained by variations in number of blades and blade angle, the actual values of which are chosen by our Sales office on receipt of a specific duty.

The fan horsepower contours relate to the HP taken by each impeller, and for contra-rotating fans shown in the upper envelope give the maximum HP taken by each stage. The contours of sound level relate to the average Sound Pressure Level (Lp) in dB, re .0002 dynes/cm<sup>2</sup>. The corresponding Sound Power Level (Lw) re 10<sup>-12</sup> watts is 21 dB higher.

TABLE 3

Octave Band Mid frequency	cps	63	125	250	500	1000	2000	4000	8000
Spectrum	dB	-6	-5	-6	-7	-9	-12	-20	-26

# TUBE AXIAL

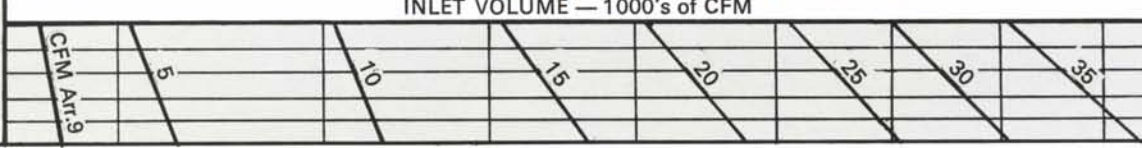
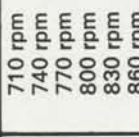
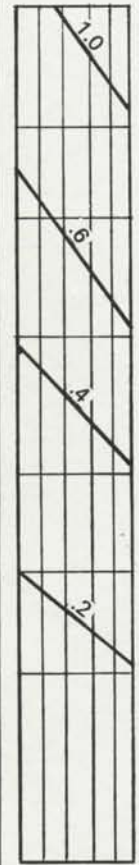
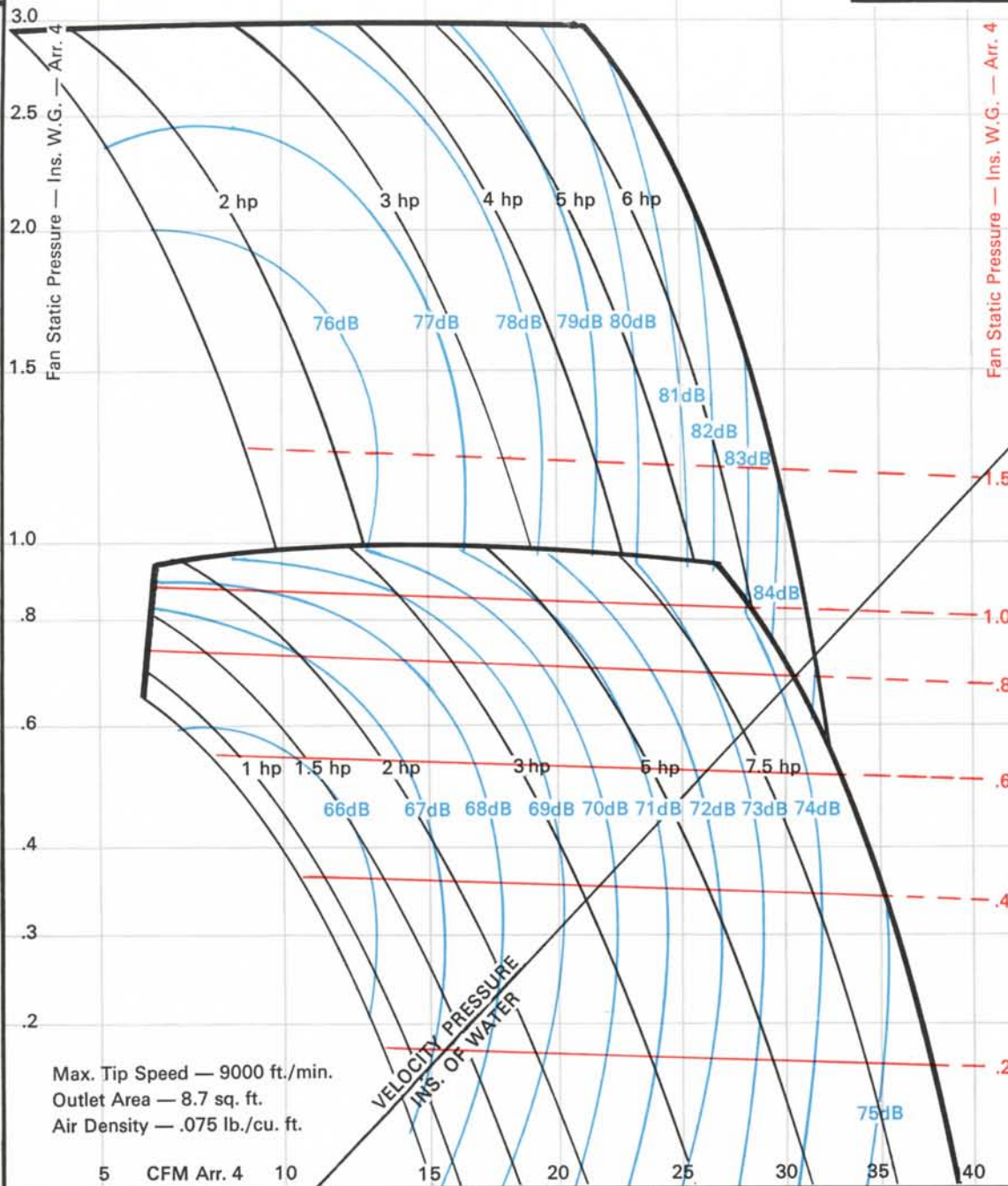
SP Regain using Outlet Cone — Ins. wg. .04 .06 .08 .1 .15 .2 .3

**SIZE A-40**  
860 rpm.

# VANE AXIAL

Belt Driven Fan — Arr. 9  
Static Pressure — Ins. W.G.  
(Applies to Single Stage Only)

Belt Driven Fan — Arr. 9  
Static Pressure — Ins. W.G.  
(Applies to Single Stage Only)



**TABLE 1** HP/SPEED CORRECTION CHART

RPM	1 hp	2 hp	4 hp	6 hp	8 hp	10 hp
710	1.0	2.0	4.0	6.0	8.0	10.0
740	1.0	2.0	4.0	6.0	8.0	10.0
770	1.0	2.0	4.0	6.0	8.0	10.0
800	1.0	2.0	4.0	6.0	8.0	10.0
830	1.0	2.0	4.0	6.0	8.0	10.0
860	1.0	2.0	4.0	6.0	8.0	10.0

The performance chart has been arranged to provide ratings for both Direct-driven and Belt driven, Tube and Vaneaxial fans. For details of a sample selection method refer to page 6.  
NB: Belt Driven Ratings Corrected for Belt Guard Losses  
The range of performance is obtained by variations in number of blades and blade angle, the actual values of which are chosen by our Sales office on receipt of a specific duty.  
The fan horsepower contours relate to the HP taken by each impeller, and for contra-rotating fans shown in the upper envelope give the maximum HP taken by each stage. The contours of sound level relate to the average Sound Pressure Level (Lp) in dB, re .0002 dynes/cm<sup>2</sup>. The corresponding Sound Power Level (Lw) re 10<sup>-12</sup> watts is 21 dB higher.

**TABLE 2**

Sound Level Correction for Speed	860	830	800	770	740	710
dB	0	-1	-1	-2	-3	-4

**TABLE 3**

Octave Band Mid frequency	cps	63	125	250	500	1000	2000	4000	8000
Spectrum	dB	-7	-5	-6	-7	-9	-12	-20	-26

# TUBE AXIAL

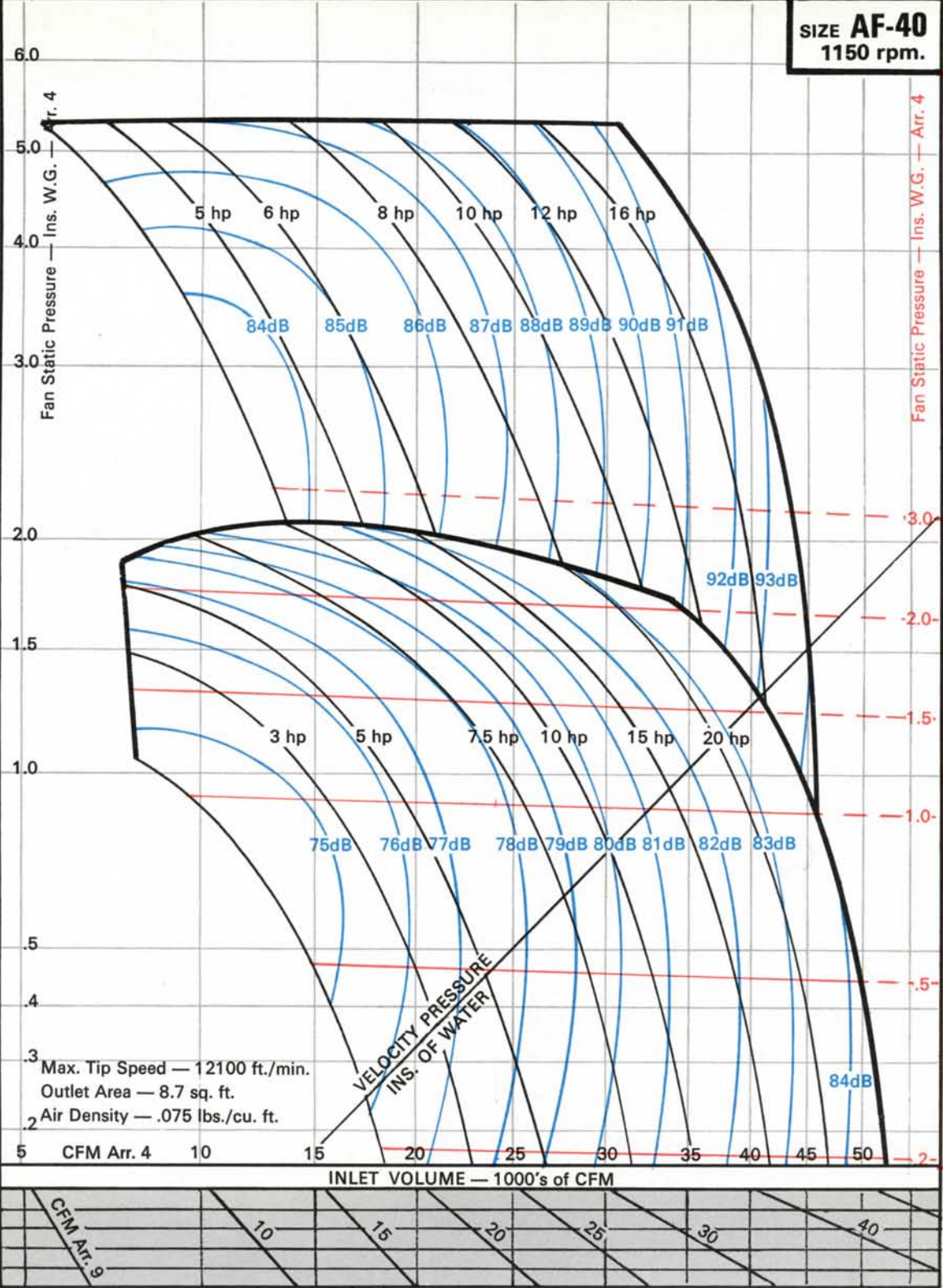
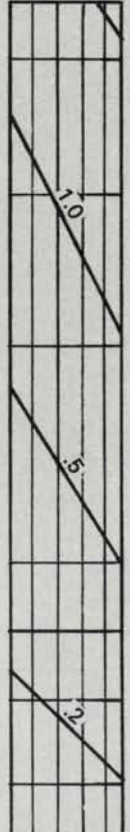
SP Regain using Outlet Cone — Ins. wg. .05 .1 .2 .3 .4 .5

**SIZE AF-40**  
1150 rpm.

# VANE AXIAL

Belt Driven Fan — Arr. 9  
Static Pressure — Ins. W.G.  
(Applies to Single Stage Only)

Belt Driven Fan — Arr. 9  
Static Pressure — Ins. W.G.  
(Applies to Single Stage Only)



900 rpm  
950 rpm  
1000 rpm  
1050 rpm  
1100 rpm  
1150 rpm

1150 rpm  
1100 rpm  
1050 rpm  
1000 rpm  
950 rpm  
900 rpm

TABLE 1 HP/SPEED CORRECTION CHART

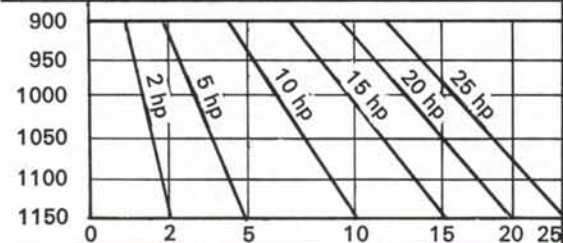


TABLE 2 Sound Level Correction for Speed

Sound Level Correction for Speed	1150	1100	1050	1000	950	900
dB	0	-1	-2	-3	-4	-5

The performance chart has been arranged to provide ratings for both Direct-driven and Belt driven, Tube and Vaneaxial fans. For details of a sample selection method refer to page 6.

NB: Belt Driven Ratings Corrected for Belt Guard Losses  
The range of performance is obtained by variations in number of blades and blade angle, the actual values of which are chosen by our Sales office on receipt of a specific duty.

The fan horsepower contours relate to the HP taken by each impeller, and for contra-rotating fans shown in the upper envelope give the maximum HP taken by each stage. The contours of sound level relate to the average Sound Pressure Level (Lp) in dB, re .0002 dynes/cm<sup>2</sup>. The corresponding Sound Power Level (Lw) re 10<sup>-12</sup> watts is 21 dB higher.

TABLE 3 Octave Band Mid frequency

Octave Band Mid frequency	cps	63	125	250	500	1000	2000	4000	8000
Spectrum	dB	-7	-6	-5	-7	-8	-12	-20	-26



# TUBE AXIAL

Belt Driven Fan — Arr. 9  
 Static Pressure — Ins. W.G.  
 (Applies to Single Stage Only)

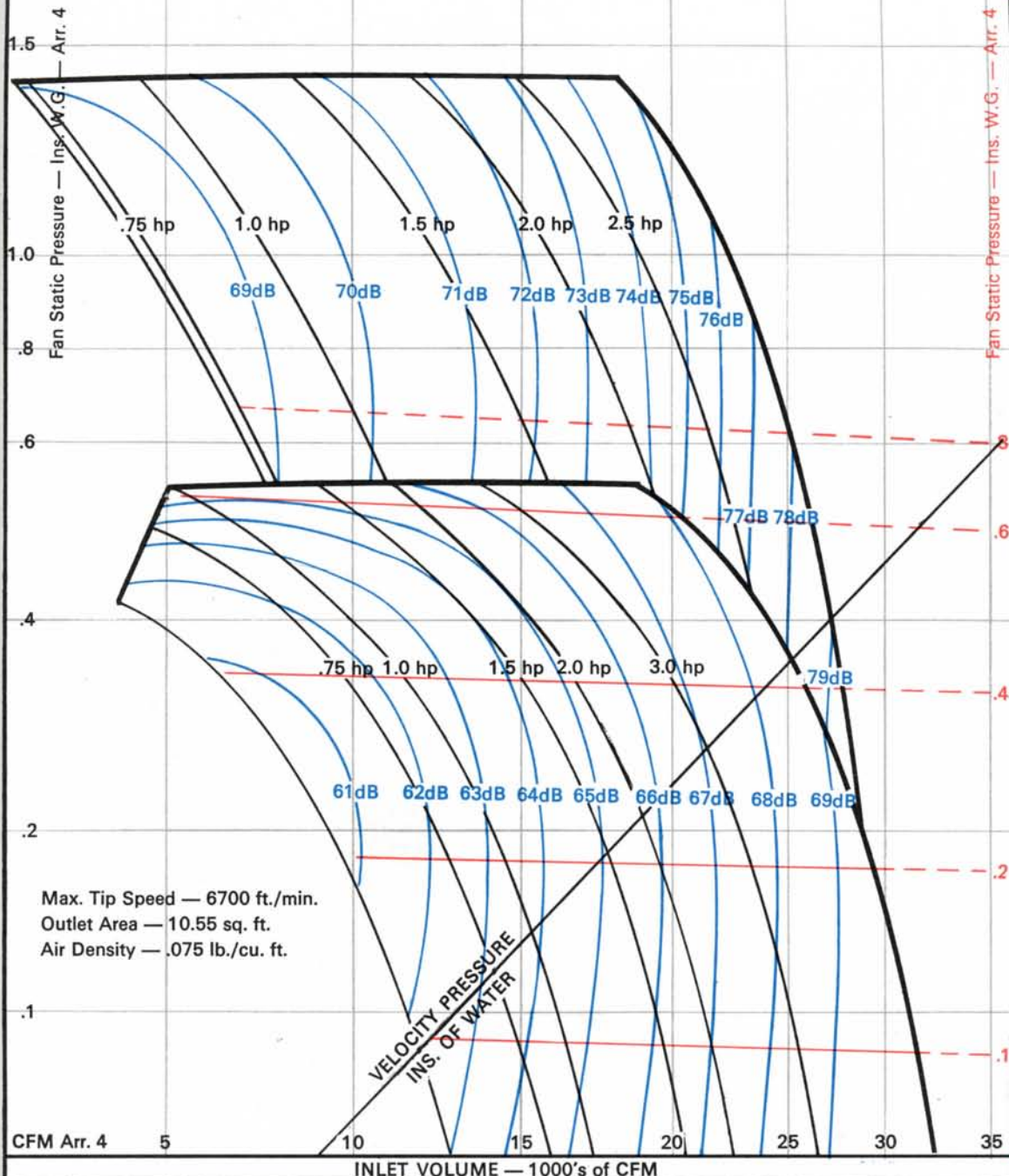
SP Regain using Outlet Cone — Ins. wg.

.02 .04 .06 .08 .10 .12 .14 .16

**SIZE AF-44**  
**580 rpm.**

# VANE AXIAL

Belt Driven Fan — Arr. 9  
 Static Pressure — Ins. W.G.  
 (Applies to Single Stage Only)



505 rpm
520 rpm
535 rpm
550 rpm
565 rpm
580 rpm

CFM Arr. 4 5 10 15 20 25 30 35

INLET VOLUME — 1000's of CFM

CFM Arr. 9	5	10	15	20	30
------------	---	----	----	----	----

TABLE 1 HP/SPEED CORRECTION CHART

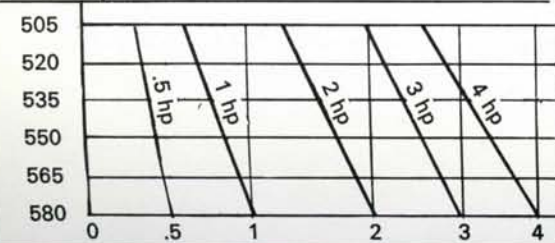


TABLE 2

Sound Level Correction for Speed	580	565	550	535	520	505
dB	0	-1	-1	-2	-3	-3

The performance chart has been arranged to provide ratings for both Direct-driven and Belt driven, Tube and Vaneaxial fans. For details of a sample selection method refer to page 6.  
 NB: Belt Driven Ratings Corrected for Belt Guard Losses  
 The range of performance is obtained by variations in number of blades and blade angle, the actual values of which are chosen by our Sales office on receipt of a specific duty.  
 The fan horsepower contours relate to the HP taken by each impeller, and for contra-rotating fans shown in the upper envelope give the maximum HP taken by each stage. The contours of sound level relate to the average Sound Pressure Level (Lp) in dB, re .0002 dynes/cm<sup>2</sup>. The corresponding Sound Power Level (Lw) re 10<sup>-12</sup> watts is **22 dB** higher.

TABLE 3

Octave Band Mid frequency	cps	63	125	250	500	1000	2000	4000	8000
Spectrum	dB	-6	-5	-6	-7	-9	-12	-20	-28

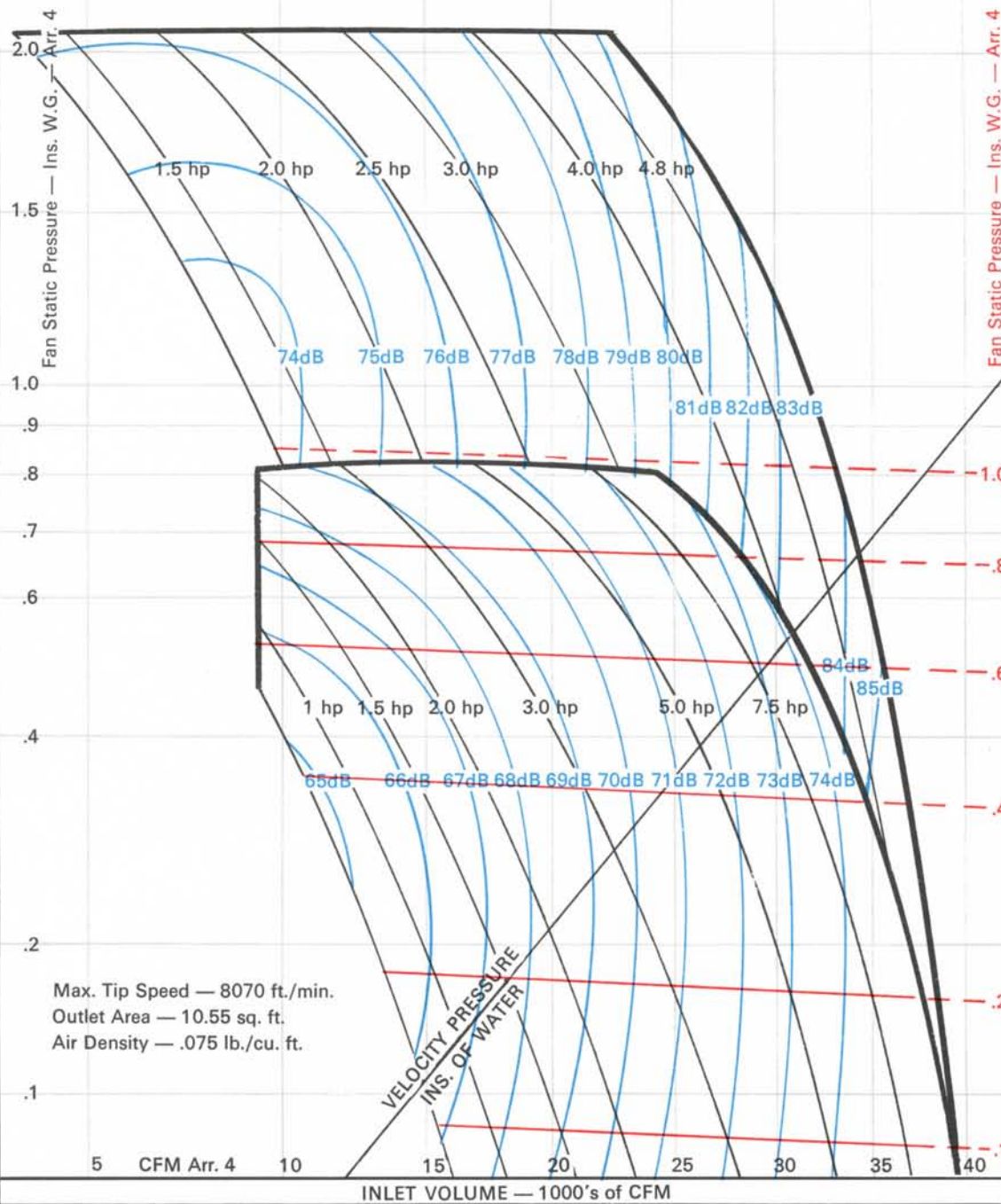
# TUBE AXIAL

SP Regain using Outlet Cone — Ins. W.G. .01 .025 .05 .075 .1 .15 .2 .25

**SIZE A-44**  
700 rpm.

# VANE AXIAL

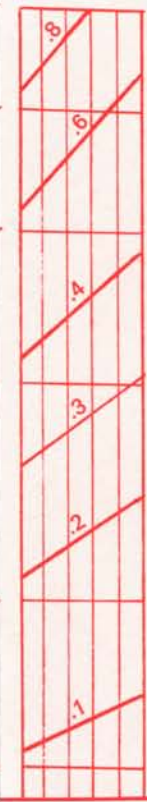
Belt Driven Fan — Arr. 9  
Static Pressure — Ins. W.G.  
(Applies to Single Stage Only)



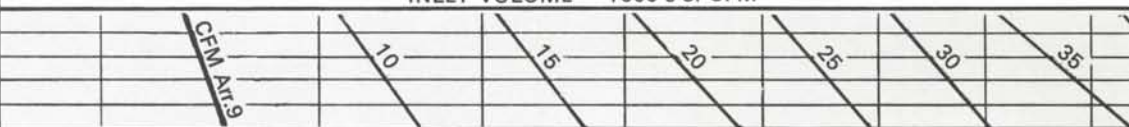
Max. Tip Speed — 8070 ft./min.  
Outlet Area — 10.55 sq. ft.  
Air Density — .075 lb./cu. ft.

Belt Driven Fan — Arr. 9  
Static Pressure — Ins. W.G.  
(Applies to Single Stage Only)

700 rpm  
680 rpm  
660 rpm  
640 rpm  
620 rpm  
600 rpm



600 rpm  
620 rpm  
640 rpm  
660 rpm  
680 rpm  
700 rpm



700 rpm  
680 rpm  
660 rpm  
640 rpm  
620 rpm  
600 rpm

TABLE 1 HP/SPEED CORRECTION CHART

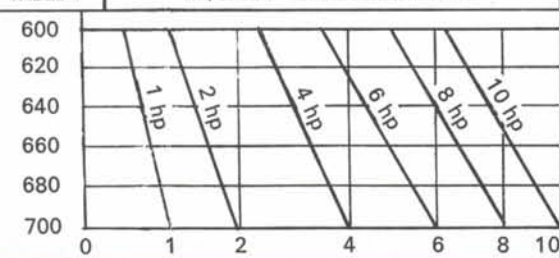


TABLE 2

Sound Level Correction for Speed	700	680	660	640	620	600
dB	0	-1	-1	-2	-3	-4

The performance chart has been arranged to provide ratings for both Direct-driven and Belt driven, Tube and Vaneaxial fans. For details of a sample selection method refer to page 6.

NB: Belt Driven Ratings Corrected for Belt Guard Losses

The range of performance is obtained by variations in number of blades and blade angle, the actual values of which are chosen by our Sales office on receipt of a specific duty.

The fan horsepower contours relate to the HP taken by each impeller, and for contra-rotating fans shown in the upper envelope give the maximum HP taken by each stage. The contours of sound level relate to the average Sound Pressure Level (Lp) in dB, re .0002 dynes/cm<sup>2</sup>. The corresponding Sound Power Level (Lw) re 10<sup>-12</sup> watts is 22 dB higher.

TABLE 3

Octave Band Mid frequency	cps	63	125	250	500	1000	2000	4000	8000
Spectrum	dB	-6	-5	-6	-7	-9	-12	-20	-26

# TUBE AXIAL

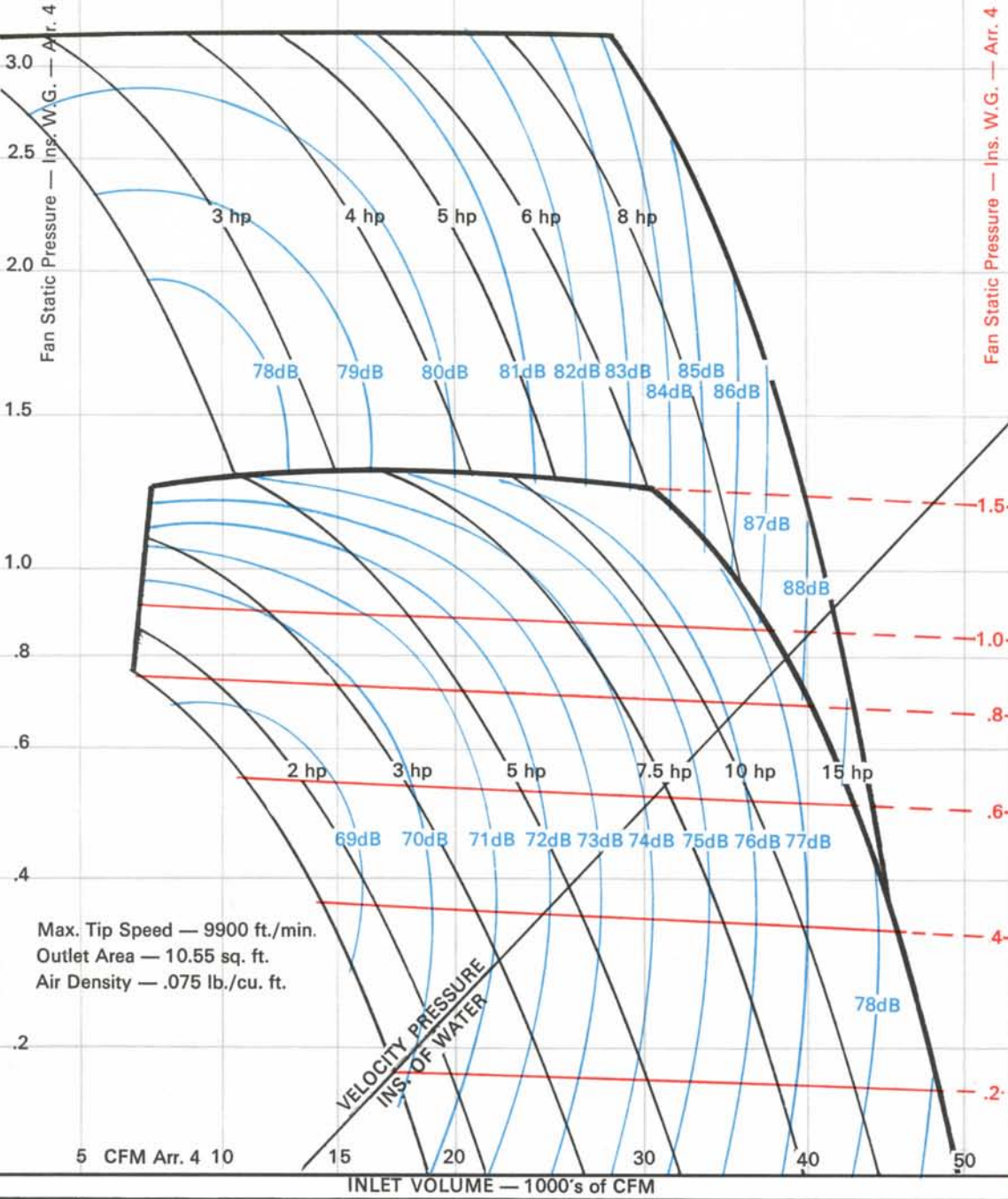
SP Regain using Outlet Cone — Ins. wg.

.05 .1 .15 .2 .3 .4

SIZE **A-44**  
860 rpm.

# VANE AXIAL

Belt Driven Fan — Arr. 9  
Static Pressure — Ins. W.G.  
(Applies to Single Stage Only)



Belt Driven Fan — Arr. 9  
Static Pressure — Ins. W.G.  
(Applies to Single Stage Only)

860 rpm  
830 rpm  
800 rpm  
770 rpm  
740 rpm  
710 rpm



860 rpm  
830 rpm  
800 rpm  
770 rpm  
740 rpm  
710 rpm

710 rpm  
740 rpm  
770 rpm  
800 rpm  
830 rpm  
860 rpm

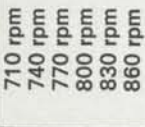


TABLE 1 HP/SPEED CORRECTION CHART

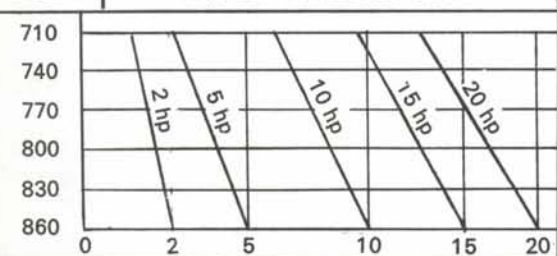


TABLE 2

Sound Level Correction for Speed	860	830	800	770	740	710
dB	0	-1	-1	-2	-3	-4

The performance chart has been arranged to provide ratings for both Direct-driven and Belt driven, Tube and Vaneaxial fans. For details of a sample selection method refer to page 6.

NB: Belt Driven Ratings Corrected for Belt Guard Losses

The range of performance is obtained by variations in number of blades and blade angle, the actual values of which are chosen by our Sales office on receipt of a specific duty.

The fan horsepower contours relate to the HP taken by each impeller, and for contra-rotating fans shown in the upper envelope give the maximum HP taken by each stage. The contours of sound level relate to the average Sound Pressure Level (Lp) in dB, re .0002 dynes/cm<sup>2</sup>. The corresponding Sound Power Level (Lw) re 10<sup>-12</sup> watts is 22 dB higher.

TABLE 3

Octave Band Mid frequency	cps	63	125	250	500	1000	2000	4000	8000
Spectrum	dB	-6	-5	-6	-7	-9	-12	-20	-26

# TUBE AXIAL

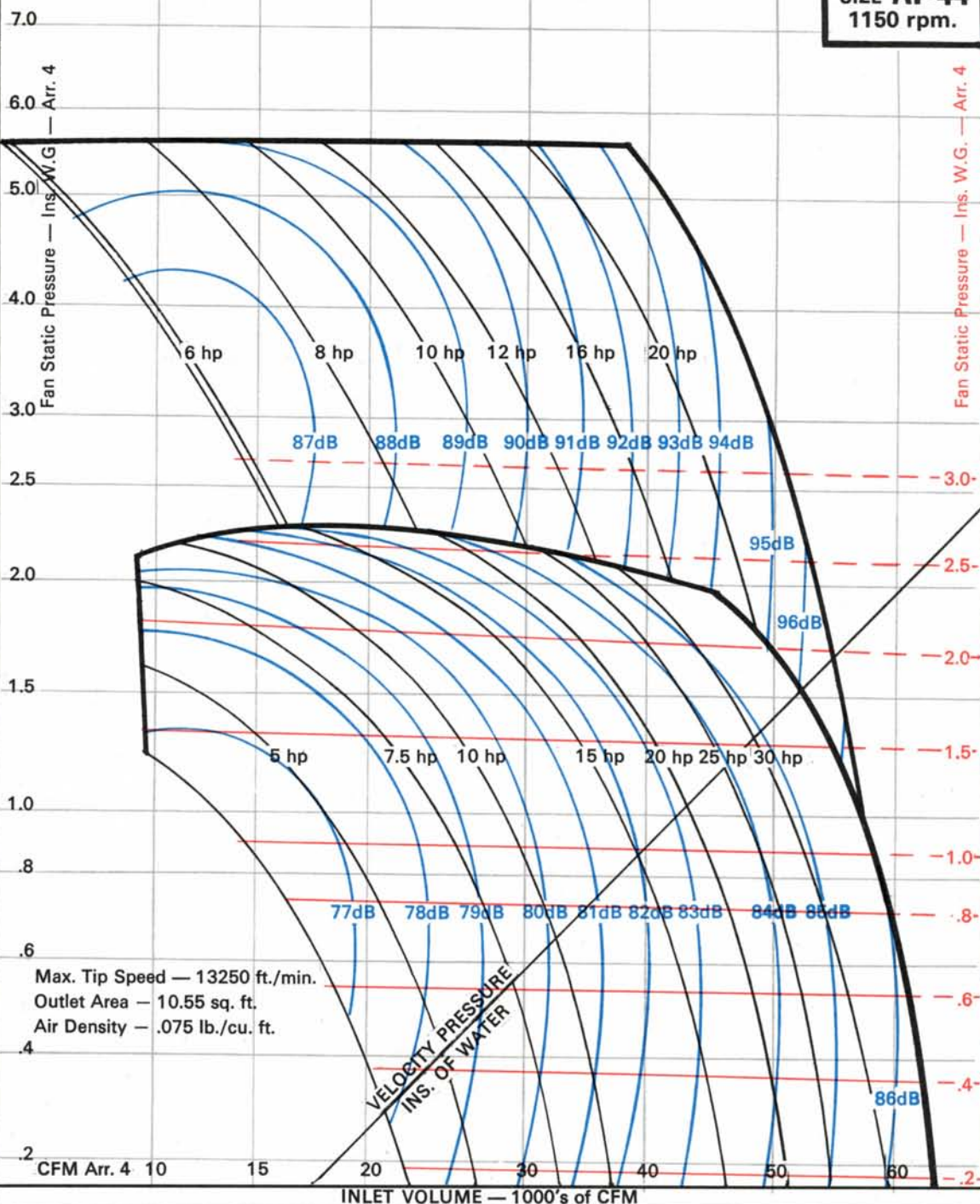
SP Regain using Outlet Cone — Ins. wg.

.1 .2 .3 .4 .5 .6

**SIZE AF-44**  
1150 rpm.

# VANE AXIAL

Belt Driven Fan — Arr. 9  
Static Pressure — Ins. W.G.  
(Applies to Single Stage Only)



Belt Driven Fan — Arr. 9  
Static Pressure — Ins. W.G.  
(Applies to Single Stage Only)

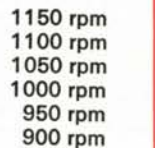
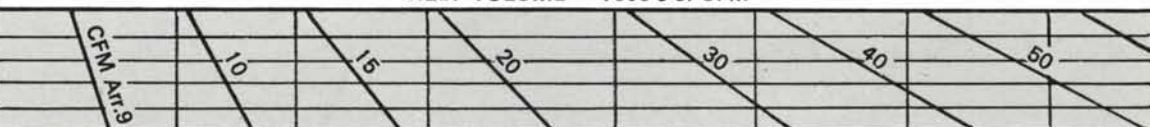
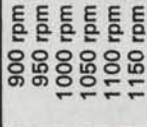
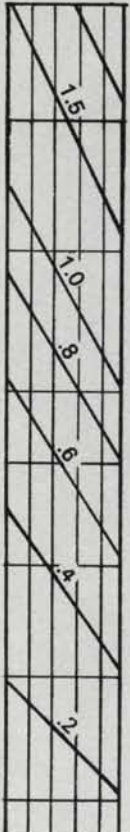


TABLE 1 HP/SPEED CORRECTION CHART

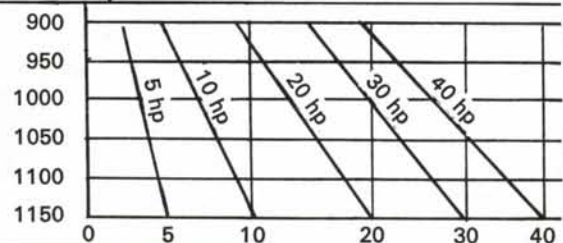


TABLE 2 Sound Level Correction for Speed

dB	1150	1100	1050	1000	950	900
	0	-1	-2	-3	-4	-5

The performance chart has been arranged to provide ratings for both Direct-driven and Belt driven, Tube and Vaneaxial fans. For details of a sample selection method refer to page 6.

NB: Belt Driven Ratings Corrected for Belt Guard Losses

The range of performance is obtained by variations in number of blades and blade angle, the actual values of which are chosen by our Sales office on receipt of a specific duty.

The fan horsepower contours relate to the HP taken by each impeller, and for contra-rotating fans shown in the upper envelope give the maximum HP taken by each stage. The contours of sound level relate to the average Sound Pressure Level (Lp) re .0002 dynes/cm<sup>2</sup>. The corresponding Sound Power Level (Lw) re 10<sup>-12</sup> watts is **22 dB** higher.

TABLE 3 Octave Band Mid frequency

Octave Band Mid frequency	cps	63	125	250	500	1000	2000	4000	8000
Spectrum	dB	-8	-6	-5	-7	-8	-12	-18	-24

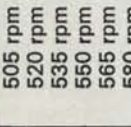
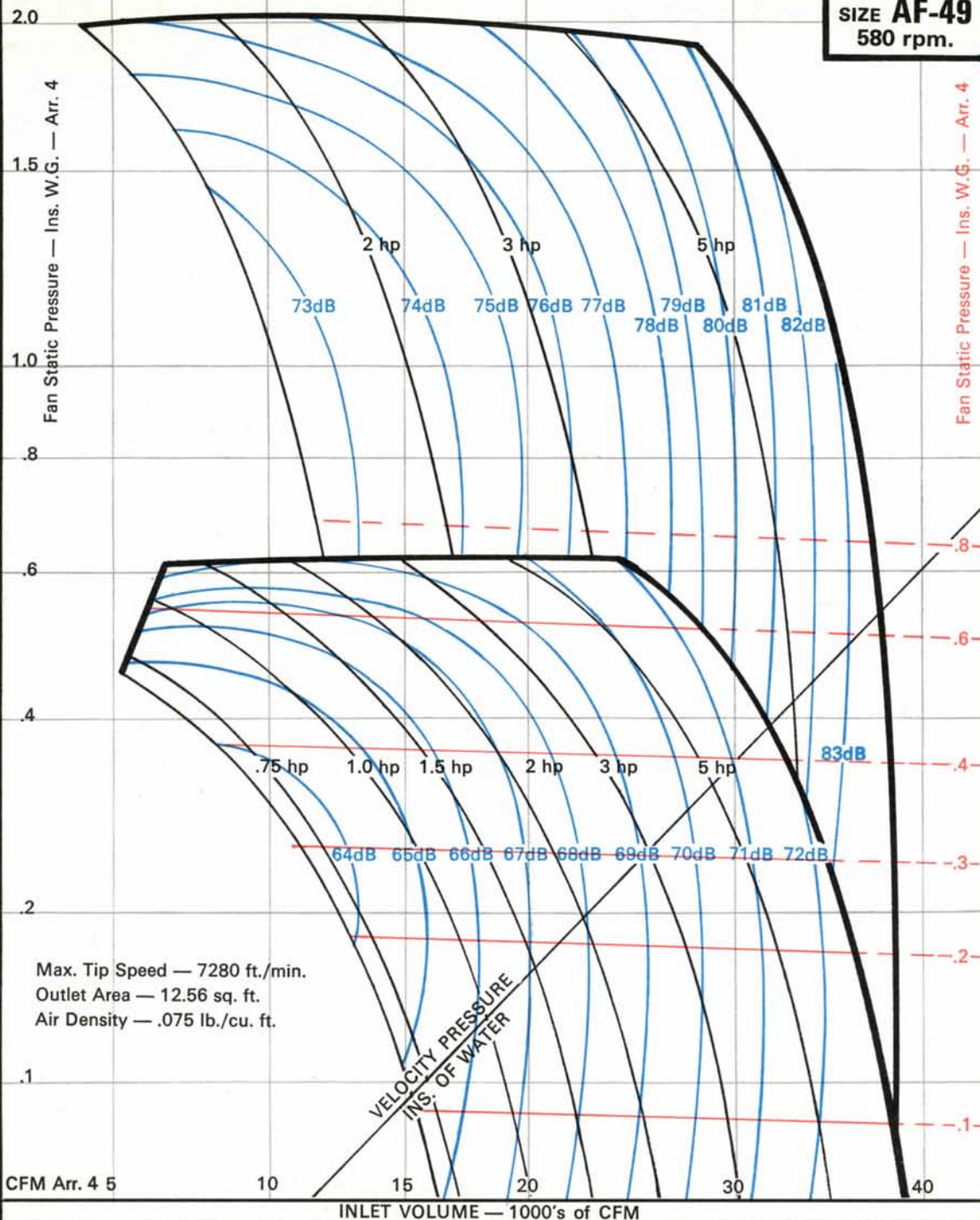
# TUBE AXIAL

# VANE AXIAL

**SIZE AF-49**  
580 rpm.

Belt Driven Fan — Arr. 9  
Static Pressure — Ins. W.G.  
(Applies to Single Stage Only)

Belt Driven Fan — Arr. 9  
Static Pressure — Ins. W.G.  
(Applies to Single Stage Only)



- 580 rpm
- 565 rpm
- 550 rpm
- 535 rpm
- 520 rpm
- 505 rpm

**TABLE 1** HP/SPEED CORRECTION CHART

Speed (rpm)	1 hp	2 hp	4 hp	6 hp	8 hp
505					
520					
535					
550					
565					
580					

**TABLE 2** Sound Level Correction for Speed

Speed (rpm)	580	565	550	535	520	505
dB	0	-1	-1	-2	-3	-3

The performance chart has been arranged to provide ratings for both Direct-driven and Belt driven, Tube and Vaneaxial fans. For details of a sample selection method refer to page 6.

NB: Belt Driven Ratings Corrected for Belt Guard Losses

The range of performance is obtained by variations in number of blades and blade angle, the actual values of which are chosen by our Sales office on receipt of a specific duty.

The fan horsepower contours relate to the HP taken by each impeller, and for contra-rotating fans shown in the upper envelope give the maximum HP taken by each stage. The contours of sound level relate to the average Sound Pressure Level (Lp) in dB, re .0002 dynes/cm<sup>2</sup>. The corresponding Sound Power Level (Lw) re 10<sup>-12</sup> watts is **22 dB** higher.

**TABLE 3**

Octave Band Mid frequency	cps	63	125	250	500	1000	2000	4000	8000
Spectrum	dB	-8	-5	-6	-7	-9	-12	-20	-26

# TUBE AXIAL

Belt Driven Fan — Arr. 9  
Static Pressure — Ins. W.G.  
(Applies to Single Stage Only)

SP Regain using Outlet Cone — Ins. wg.

.05

.1

.15

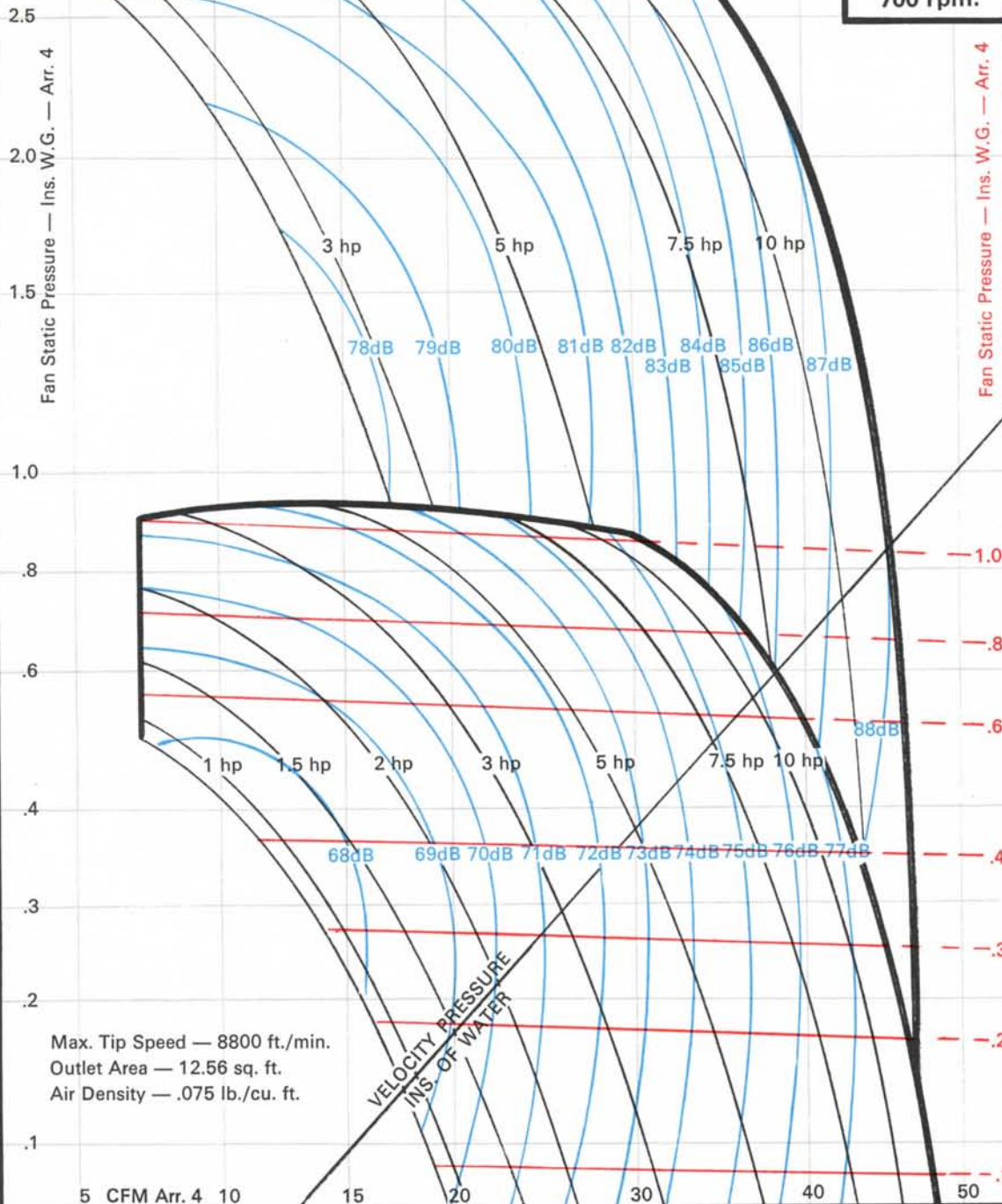
.2

.3

SIZE AF-49  
700 rpm.

# VANE AXIAL

Belt Driven Fan — Arr. 9  
Static Pressure — Ins. W.G.  
(Applies to Single Stage Only)



Max. Tip Speed — 8800 ft./min.  
Outlet Area — 12.56 sq. ft.  
Air Density — .075 lb./cu. ft.

INLET VOLUME — 1000's of CFM



600 rpm  
620 rpm  
640 rpm  
660 rpm  
680 rpm  
700 rpm

700 rpm  
680 rpm  
660 rpm  
640 rpm  
620 rpm  
600 rpm



700 rpm  
680 rpm  
660 rpm  
640 rpm  
620 rpm  
600 rpm

TABLE 1 HP/SPEED CORRECTION CHART

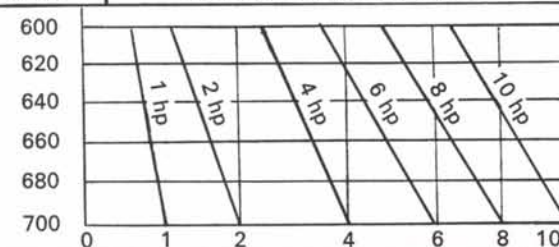


TABLE 2

Sound Level Correction for Speed	700	680	660	640	620	600
dB	0	-1	-1	-2	-3	-4

The performance chart has been arranged to provide ratings for both Direct-driven and Belt driven, Tube and Vaneaxial fans. For details of a sample selection method refer to page 6.

NB: Belt Driven Ratings Corrected for Belt Guard Losses

The range of performance is obtained by variations in number of blades and blade angle, the actual values of which are chosen by our Sales office on receipt of a specific duty.

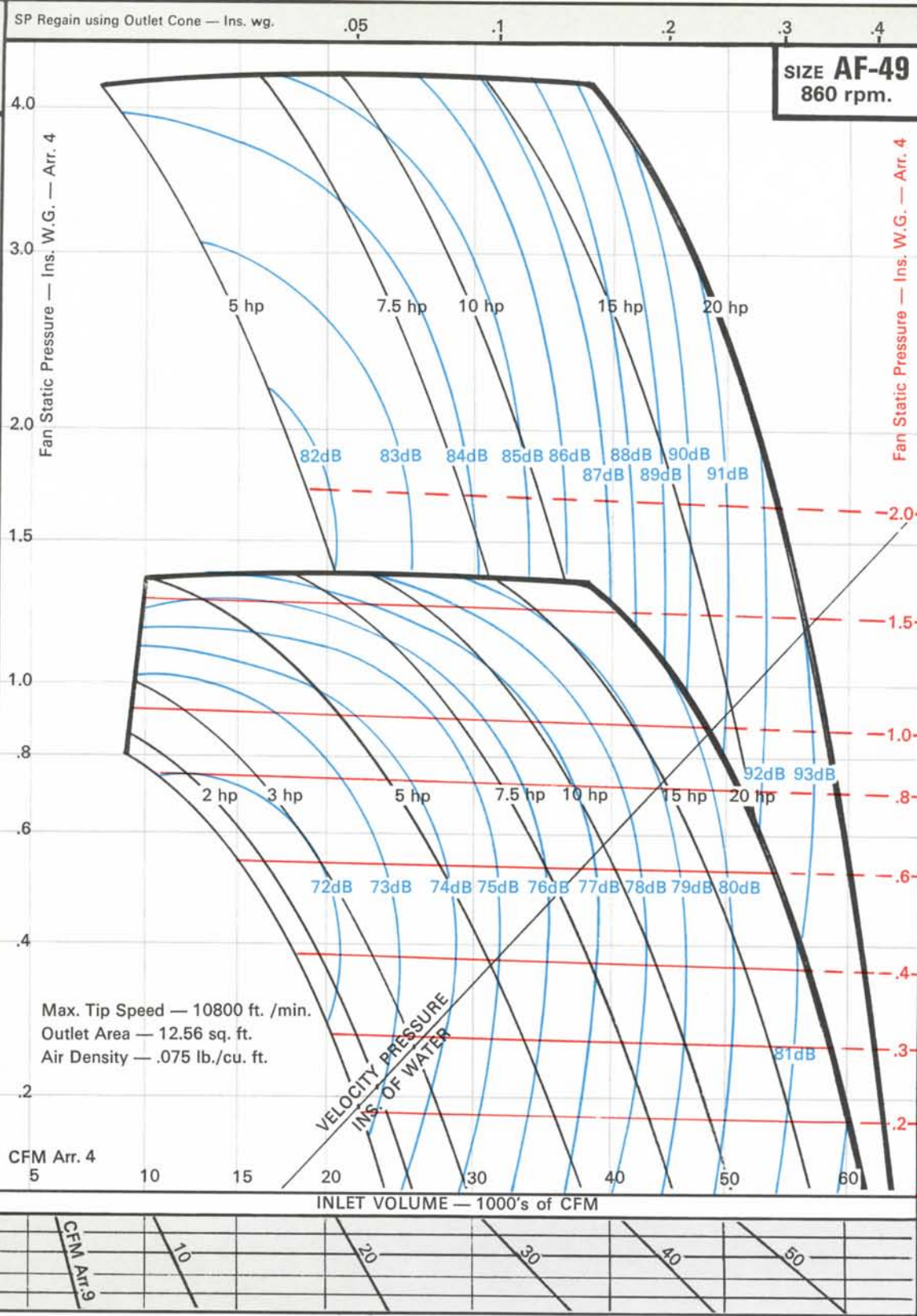
The fan horsepower contours relate to the HP taken by each impeller, and for contra-rotating fans shown in the upper envelope give the maximum HP taken by each stage. The contours of sound level relate to the average Sound Pressure Level (Lp) in dB, re .0002 dynes/cm<sup>2</sup>. The corresponding Sound Power Level (Lw) re 10<sup>-12</sup> watts is 22 dB higher.

TABLE 3

Octave Band Mid frequency	cps	63	125	250	500	1000	2000	4000	8000
Spectrum	dB	-6	-5	-6	-7	-9	-12	-20	-26

# TUBE AXIAL

Belt Driven Fan — Arr. 9  
Static Pressure — Ins. W.G.  
(Applies to Single Stage Only)



# VANE AXIAL

Belt Driven Fan — Arr. 9  
Static Pressure — Ins. W.G.  
(Applies to Single Stage Only)



**TABLE 1** HP/SPEED CORRECTION CHART

710						
740						
770						
800						
830						
860						
	0	2	5	10	15	20
		2 hp	5 hp	10 hp	15 hp	20 hp

**TABLE 2**

Sound Level Correction for Speed	860	830	800	770	740	710
dB	0	-1	-1	-2	-3	-4

The performance chart has been arranged to provide ratings for both Direct-driven and Belt driven, Tube and Vaneaxial fans. For details of a sample selection method refer to page 6.

NB: Belt Driven Ratings Corrected for Belt Guard Losses

The range of performance is obtained by variations in number of blades and blade angle, the actual values of which are chosen by our Sales office on receipt of a specific duty.

The fan horsepower contours relate to the HP taken by each impeller, and for contra-rotating fans shown in the upper envelope give the maximum HP taken by each stage. The contours of sound level relate to the average Sound Pressure Level (Lp) in dB, re .0002 dynes/cm<sup>2</sup>. The corresponding Sound Power Level (Lw) re 10<sup>-12</sup> watts is 22 dB higher.

**TABLE 3**

Octave Band Mid frequency	cps	63	125	250	500	1000	2000	4000	8000
Spectrum	dB	-6	-5	-6	-7	-9	-12	-20	-27

# TUBE AXIAL

SP Regain using Outlet Cone — Ins. wg.

.1 .2 .3 .4 .5 .6

**SIZE AF-49**  
1150 rpm.

# VANE AXIAL

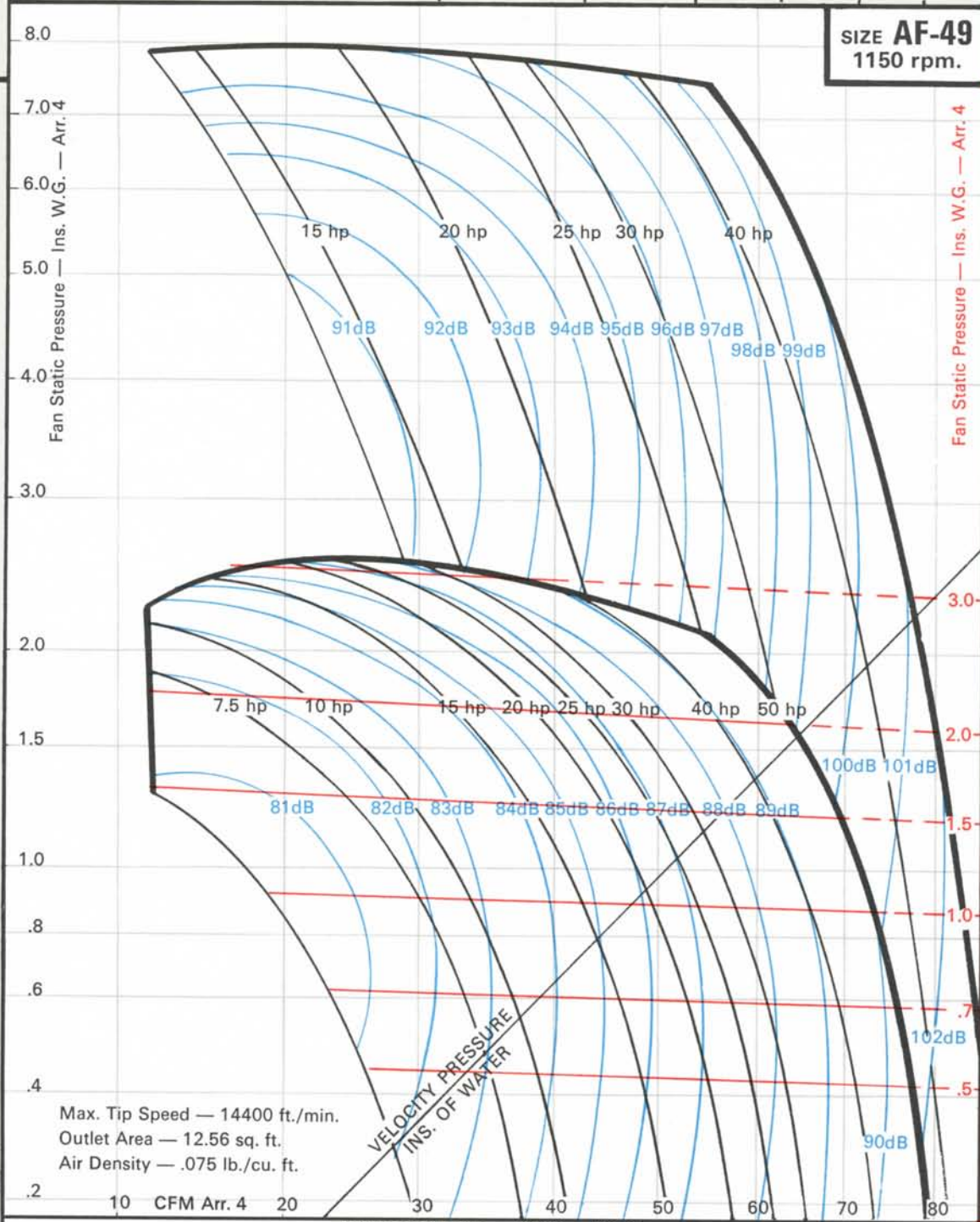
Belt Driven Fan — Arr. 9  
Static Pressure — Ins. W.G.  
(Applies to Single Stage Only)

Fan Static Pressure — Ins. W.G. — Arr. 4

Fan Static Pressure — Ins. W.G. — Arr. 4

Belt Driven Fan — Arr. 9  
Static Pressure — Ins. W.G.  
(Applies to Single Stage Only)

1150 rpm  
1100 rpm  
1050 rpm  
1000 rpm  
950 rpm  
900 rpm



Max. Tip Speed — 14400 ft./min.  
Outlet Area — 12.56 sq. ft.  
Air Density — .075 lb./cu. ft.

VELOCITY PRESSURE  
INS. OF WATER

INLET VOLUME — 1000's of CFM



1150 rpm  
1100 rpm  
1050 rpm  
1000 rpm  
950 rpm  
900 rpm

900 rpm  
950 rpm  
1000 rpm  
1050 rpm  
1100 rpm  
1150 rpm

TABLE 1 HP/SPEED CORRECTION CHART

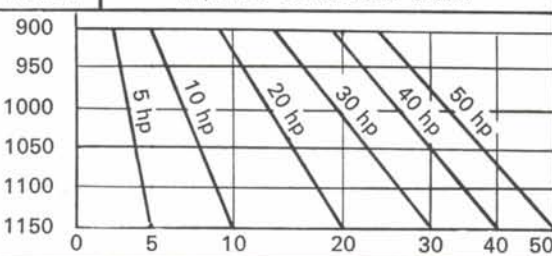


TABLE 2

Sound Level Correction for Speed	1150	1100	1050	1000	950	900
dB	0	-1	-2	-3	-4	-5

The performance chart has been arranged to provide ratings for both Direct-driven and Belt driven, Tube and Vaneaxial fans. For details of a sample selection method refer to page 6.

NB: Belt Driven Ratings Corrected for Belt Guard Losses

The range of performance is obtained by variations in number of blades and blade angle, the actual values of which are chosen by our Sales office on receipt of a specific duty.

The fan horsepower contours relate to the HP taken by each impeller, and for contra-rotating fans shown in the upper envelope give the maximum HP taken by each stage. The contours of sound level relate to the average Sound Pressure Level (Lp) in dB, re .0002 dynes/cm<sup>2</sup>. The corresponding Sound Power Level (Lw) re 10<sup>-12</sup> watts is 22 dB higher.

TABLE 3

Octave Band Mid frequency	cps	63	125	250	500	1000	2000	4000	8000
Spectrum	dB	-8	-6	-5	-7	-8	-12	-18	-25



# TUBE AXIAL

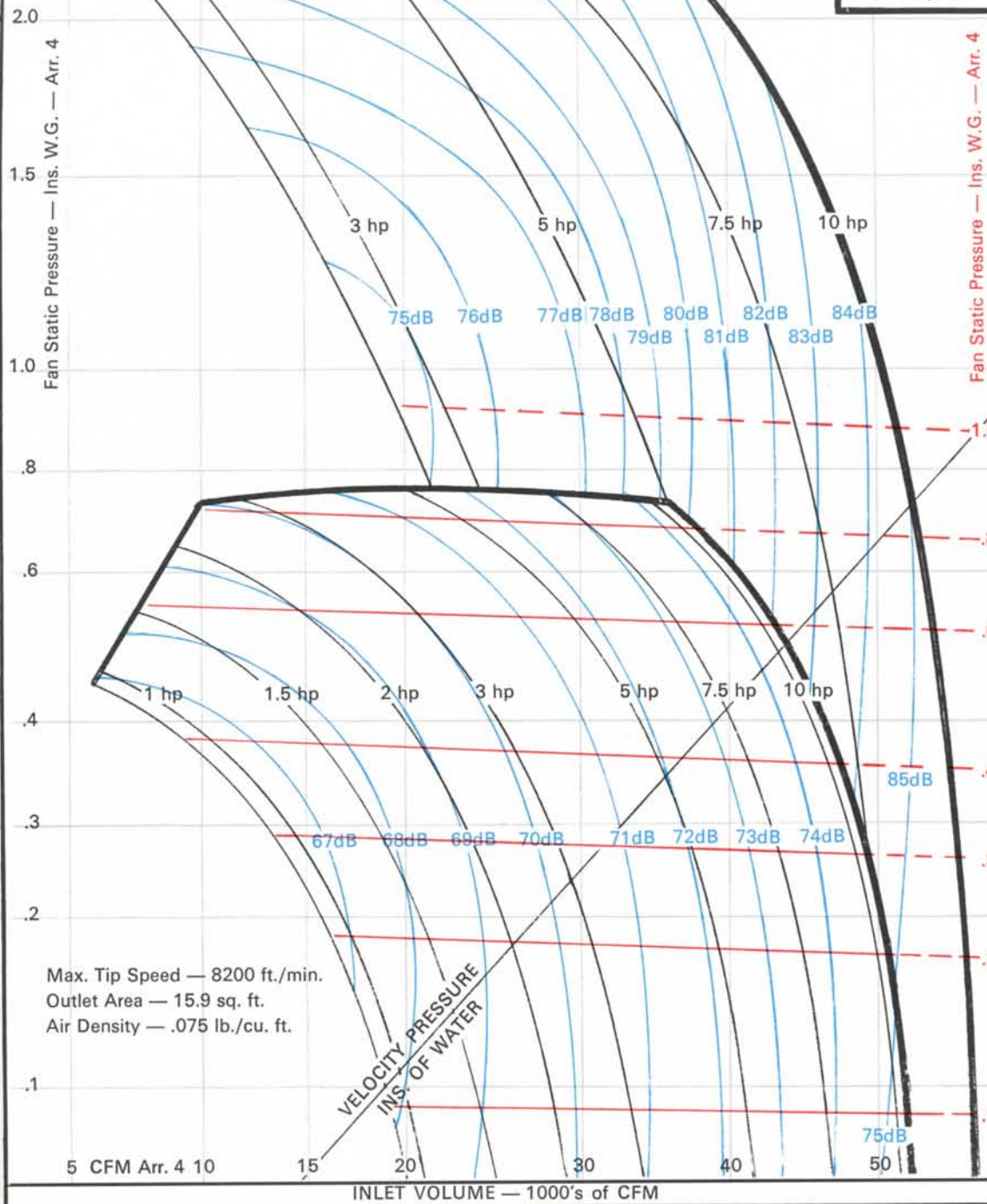
SP Regain using Outlet Cone — Ins. wg.

.02 .05 .08 .10 .15 .20

SIZE **AF-54**  
580 rpm.

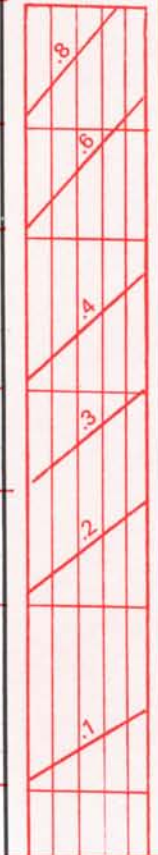
# VANE AXIAL

Belt Driven Fan — Arr. 9  
Static Pressure — Ins. W.G.  
(Applies to Single Stage Only)



Belt Driven Fan — Arr. 9  
Static Pressure — Ins. W.G.  
(Applies to Single Stage Only)

580 rpm  
565 rpm  
550 rpm  
535 rpm  
520 rpm  
505 rpm



580 rpm  
565 rpm  
550 rpm  
535 rpm  
520 rpm  
505 rpm

TABLE 1 HP/SPEED CORRECTION CHART

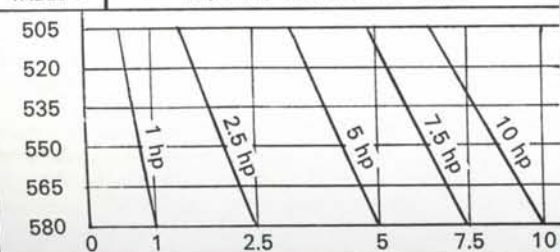


TABLE 2

Sound Level Correction for Speed	580	565	550	535	520	505
dB	0	-1	-1	-2	-3	-3

The performance chart has been arranged to provide ratings for both Direct-driven and Belt driven, Tube and Vaneaxial fans. For details of a sample selection method refer to page 6.

NB: Belt Driven Ratings Corrected for Belt Guard Losses

The range of performance is obtained by variations in number of blades and blade angle, the actual values of which are chosen by our Sales office on receipt of a specific duty.

The fan horsepower contours relate to the HP taken by each impeller, and for contra-rotating fans shown in the upper envelope give the maximum HP taken by each stage. The contours of sound level relate to the average Sound Pressure Level (Lp) in dB, re .0002 dynes/cm<sup>2</sup>. The corresponding Sound Power Level (Lw) re 10<sup>-12</sup> watts is 23 dB higher.

TABLE 3

Octave Band Mid frequency	cps	63	125	250	500	1000	2000	4000	8000
Spectrum	dB	-6	-5	-6	-7	-9	-12	-20	-26

# TUBE AXIAL

SP Regain using Outlet Cone — Ins. wg.

.05

.1

.2

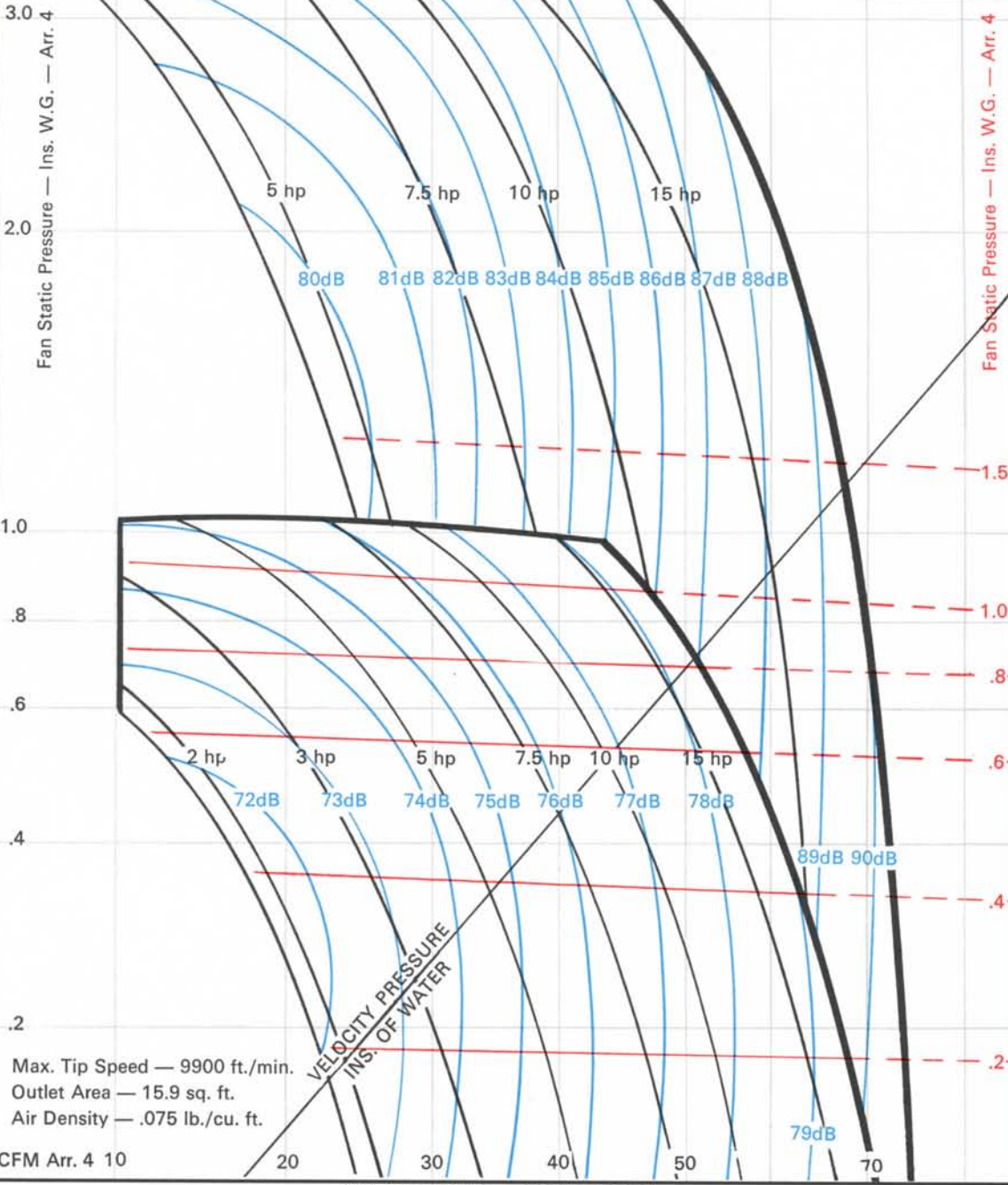
.3

.4

**SIZE AF-54**  
700 rpm.

# VANE AXIAL

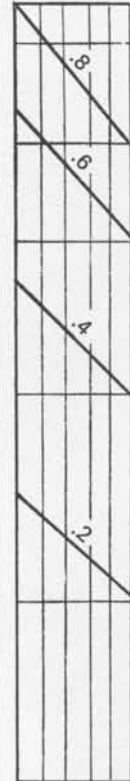
Belt Driven Fan — Arr. 9  
Static Pressure — Ins. W.G.  
(Applies to Single Stage Only)



Max. Tip Speed — 9900 ft./min.  
Outlet Area — 15.9 sq. ft.  
Air Density — .075 lb./cu. ft.

CFM Arr. 4 10

INLET VOLUME — 1000's of CFM

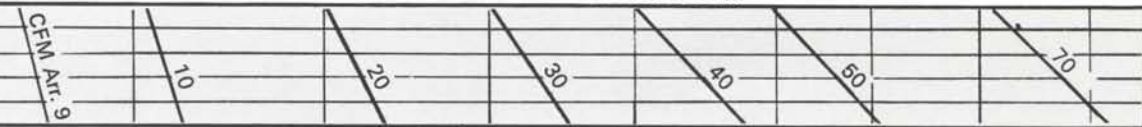


Belt Driven Fan — Arr. 9  
Static Pressure — Ins. W.G.  
(Applies to Single Stage Only)

700 rpm  
680 rpm  
660 rpm  
640 rpm  
620 rpm  
600 rpm

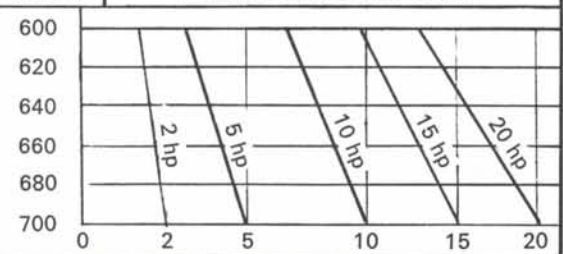


600 rpm  
620 rpm  
640 rpm  
660 rpm  
680 rpm  
700 rpm



700 rpm  
680 rpm  
660 rpm  
640 rpm  
620 rpm  
600 rpm

TABLE 1 HP/SPEED CORRECTION CHART



Sound Level Correction for Speed	700	680	660	640	620	600
dB	0	-1	-1	-2	-3	-4

The performance chart has been arranged to provide ratings for both Direct-driven and Belt driven, Tube and Vaneaxial fans. For details of a sample selection method refer to page 6.

NB: Belt Driven Ratings Corrected for Belt Guard Losses  
The range of performance is obtained by variations in number of blades and blade angle, the actual values of which are chosen by our Sales office on receipt of a specific duty.

The fan horsepower contours relate to the HP taken by each impeller, and for contra-rotating fans shown in the upper envelope give the maximum HP taken by each stage. The contours of sound level relate to the average Sound Pressure Level (Lp) in dB, re .0002 dynes/cm<sup>2</sup>. The corresponding Sound Power Level (Lw) re 10<sup>-12</sup> watts is 23 dB higher.

Octave Band Mid frequency	cps	63	125	250	500	1000	2000	4000	8000
Spectrum	dB	-6	-5	-6	-7	-9	-12	-20	-26

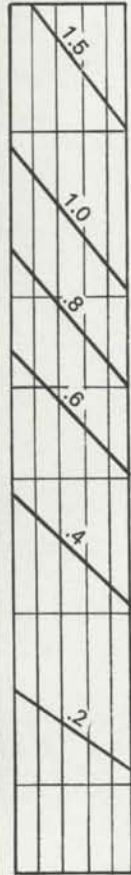
# TUBE AXIAL

SP Regain using Outlet Cone — Ins. wg. .05 .1 .2 .3 .4 .5 .6

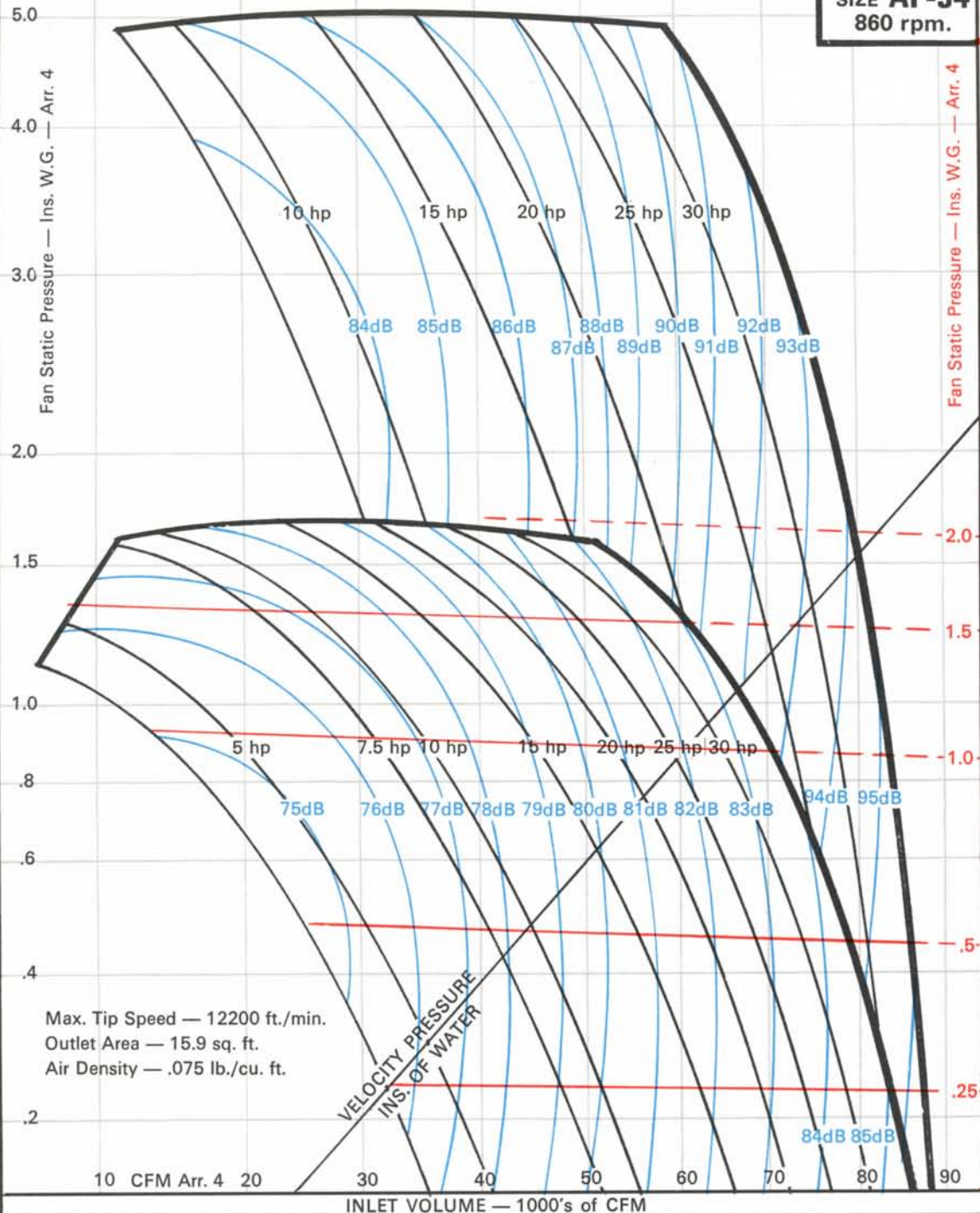
SIZE **AF-54**  
860 rpm.

# VANE AXIAL

Belt Driven Fan — Arr. 9  
Static Pressure — Ins. W.G.  
(Applies to Single Stage Only)



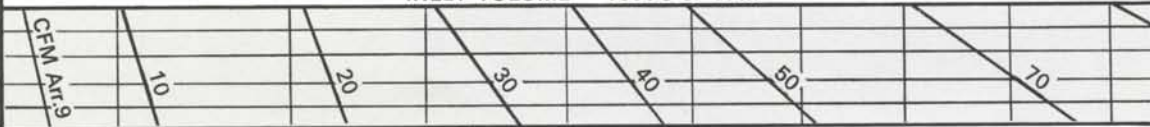
710 rpm  
740 rpm  
770 rpm  
800 rpm  
830 rpm  
860 rpm



Max. Tip Speed — 12200 ft./min.  
Outlet Area — 15.9 sq. ft.  
Air Density — .075 lb./cu. ft.

VELOCITY PRESSURE  
INS. OF WATER

10 CFM Arr. 4 20 30 40 50 60 70 80 90  
INLET VOLUME — 1000's of CFM

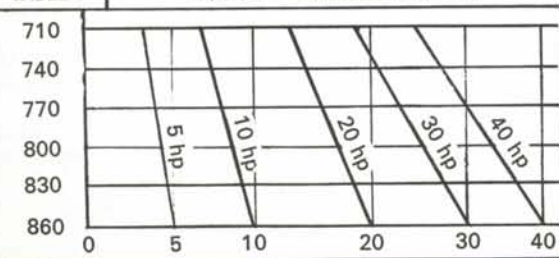


860 rpm  
830 rpm  
800 rpm  
770 rpm  
740 rpm  
710 rpm



860 rpm  
830 rpm  
800 rpm  
770 rpm  
740 rpm  
710 rpm

TABLE 1 HP/SPEED CORRECTION CHART



Sound Level Correction for Speed	860	830	800	770	740	710
dB	0	-1	-1	-2	-3	-4

The performance chart has been arranged to provide ratings for both Direct-driven and Belt driven, Tube and Vaneaxial fans. For details of a sample selection method refer to page 6.

NB: Belt Driven Ratings Corrected for Belt Guard Losses

The range of performance is obtained by variations in number of blades and blade angle, the actual values of which are chosen by our Sales office on receipt of a specific duty.

The fan horsepower contours relate to the HP taken by each impeller, and for contra-rotating fans shown in the upper envelope give the maximum HP taken by each stage. The contours of sound level relate to the average Sound Pressure Level (Lp) in dB, re .0002 dynes/cm<sup>2</sup>. The corresponding Sound Power Level (Lw) re 10<sup>-12</sup> watts is 23 dB higher.

Octave Band Mid frequency	cps	63	125	250	500	1000	2000	4000	8000
Spectrum	dB	-6	-5	-6	-7	-9	-12	-20	-26

# TUBE AXIAL

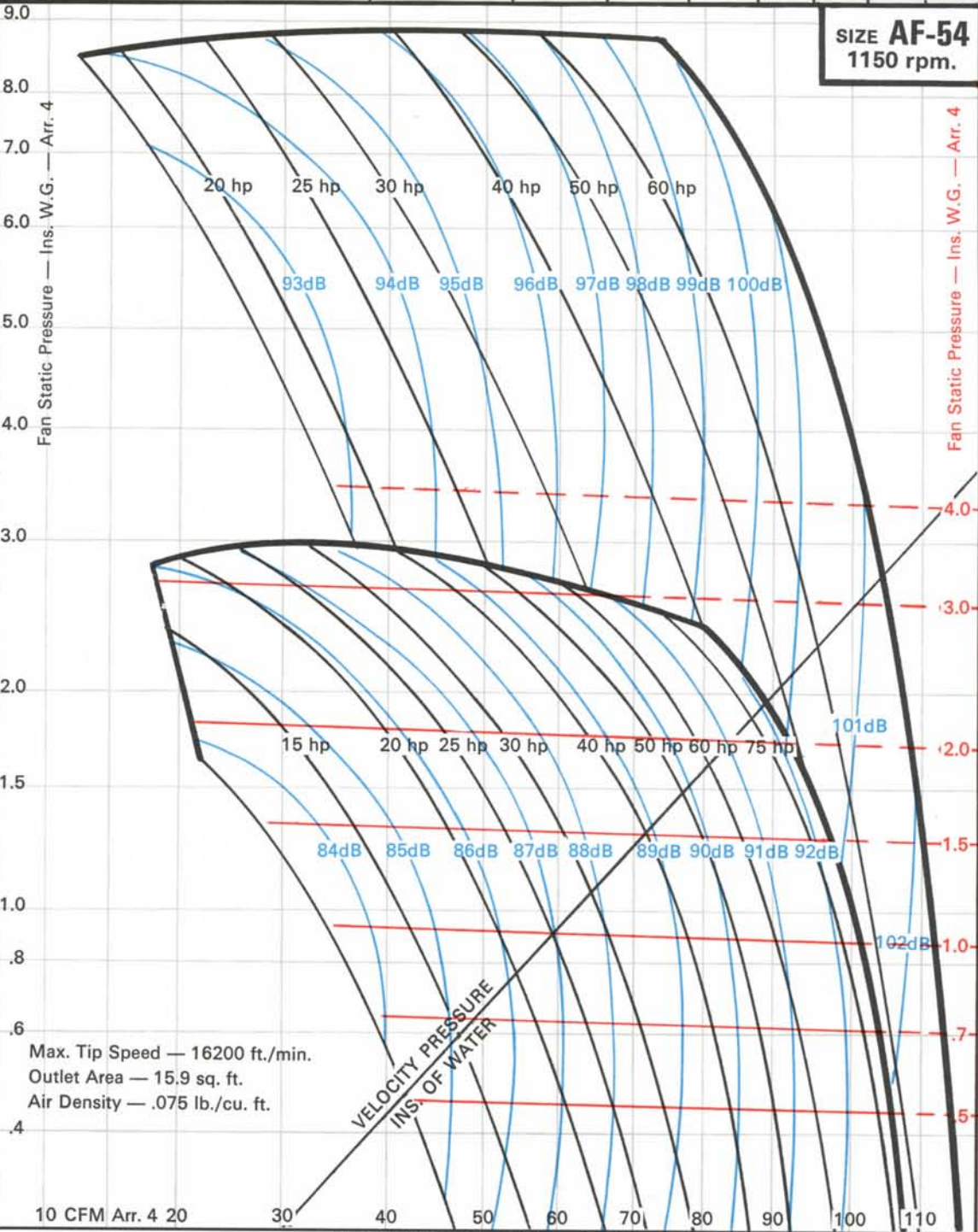
SP Regain using Outlet Cone — Ins. wg. .1 .2 .3 .4 .5 .6 .7 .8 .9

**SIZE AF-54**  
1150 rpm.

# VANE AXIAL

Belt Driven Fan — Arr. 9  
Static Pressure — Ins. W.G.  
(Applies to Single Stage Only)

Belt Driven Fan — Arr. 9  
Static Pressure — Ins. W.G.  
(Applies to Single Stage Only)

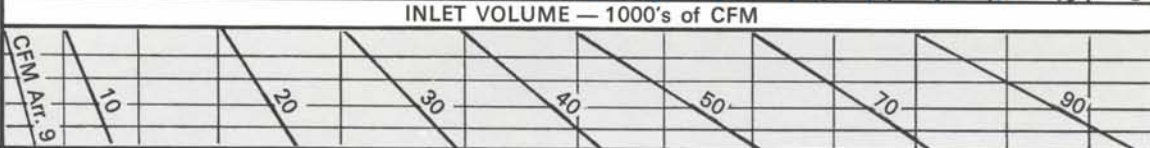


Max. Tip Speed — 16200 ft./min.  
Outlet Area — 15.9 sq. ft.  
Air Density — .075 lb./cu. ft.



900 rpm  
950 rpm  
1000 rpm  
1050 rpm  
1100 rpm  
1150 rpm

1150 rpm  
1100 rpm  
1050 rpm  
1000 rpm  
950 rpm  
900 rpm



**TABLE 1** HP/SPEED CORRECTION CHART

RPM	900	950	1000	1050	1100	1150
HP	10 hp	20 hp	40 hp	60 hp	80 hp	

**TABLE 2**

Sound Level Correction for Speed	1150	1100	1050	1000	950	900
dB	0	-1	-2	-3	-4	-5

The performance chart has been arranged to provide ratings for both Direct-driven and Belt driven, Tube and Vaneaxial fans. For details of a sample selection method refer to page 6.  
NB: Belt Driven Ratings Corrected for Belt Guard Losses  
The range of performance is obtained by variations in number of blades and blade angle, the actual values of which are chosen by our Sales office on receipt of a specific duty.  
The fan horsepower contours relate to the HP taken by each impeller, and for contra-rotating fans shown in the upper envelope give the maximum HP taken by each stage. The contours of sound level relate to the average Sound Pressure Level (Lp) in dB, re .0002 dynes/cm<sup>2</sup>. The corresponding Sound Power Level (Lw) re 10<sup>-12</sup> watts is 23 dB higher.

**TABLE 3**

Octave Band Mid frequency	cps	63	125	250	500	1000	2000	4000	8000
Spectrum	dB	-8	-6	-5	-7	-8	-12	-18	-24

# TUBE AXIAL

SP Regain using Outlet Cone — Ins. wg.

.05

.1

.15

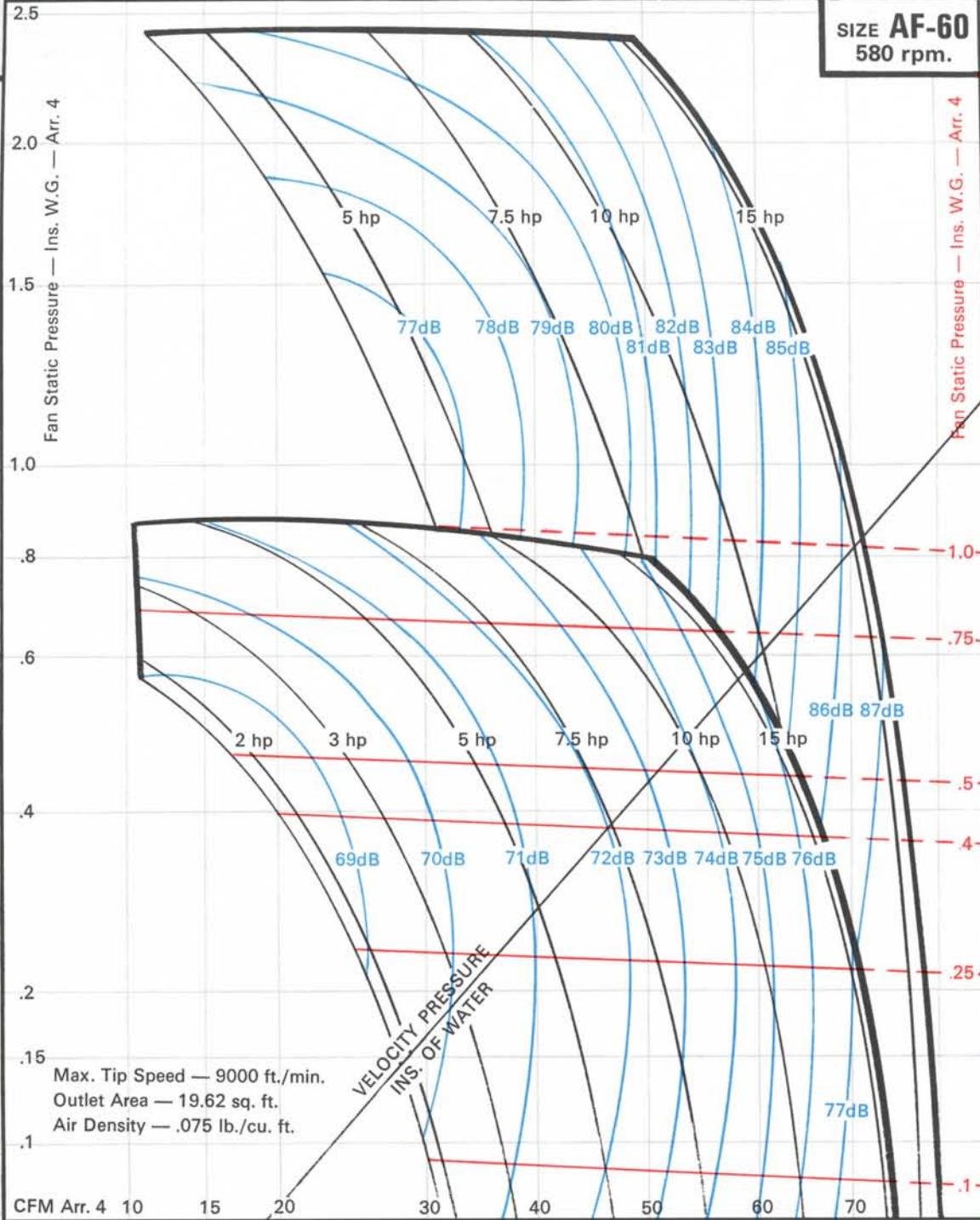
.2

.3

**SIZE AF-60**  
580 rpm.

# VANE AXIAL

Belt Driven Fan — Arr. 9  
Static Pressure — Ins. W.G.  
(Applies to Single Stage Only)



Belt Driven Fan — Arr. 9  
Static Pressure — Ins. W.G.  
(Applies to Single Stage Only)

580 rpm  
565 rpm  
550 rpm  
535 rpm  
520 rpm  
505 rpm



505 rpm  
520 rpm  
535 rpm  
550 rpm  
565 rpm  
580 rpm

580 rpm  
565 rpm  
550 rpm  
535 rpm  
520 rpm  
505 rpm

**TABLE 1** HP/SPEED CORRECTION CHART

505						
520						
535	2 hp					
550		5 hp				
565			10 hp			
580				15 hp	20 hp	
	0	2	5	10	15	20

**TABLE 2**

Sound Level Correction for Speed	580	565	550	535	520	505
dB	0	-1	-1	-2	-3	-3

The performance chart has been arranged to provide ratings for both Direct-driven and Belt driven, Tube and Vaneaxial fans. For details of a sample selection method refer to page 6.  
NB: Belt Driven Ratings Corrected for Belt Guard Losses  
The range of performance is obtained by variations in number of blades and blade angle, the actual values of which are chosen by our Sales office on receipt of a specific duty.  
The fan horsepower contours relate to the HP taken by each impeller, and for contra-rotating fans shown in the upper envelope give the maximum HP taken by each stage. The contours of sound level relate to the average Sound Pressure Level (Lp) in dB, re .0002 dynes/cm<sup>2</sup>. The corresponding Sound Power Level (Lw) re 10<sup>-12</sup> watts is 24 dB higher.

**TABLE 3**

Octave Band Mid frequency	cps	63	125	250	500	1000	2000	4000	8000
Spectrum	dB	-6	-5	-6	-7	-9	-12	-20	-26

# TUBE AXIAL

SP Regain using Outlet Cone — Ins. wg.

.05

.1

.15

.2

.3

.4

**SIZE AF-60**  
700 rpm.

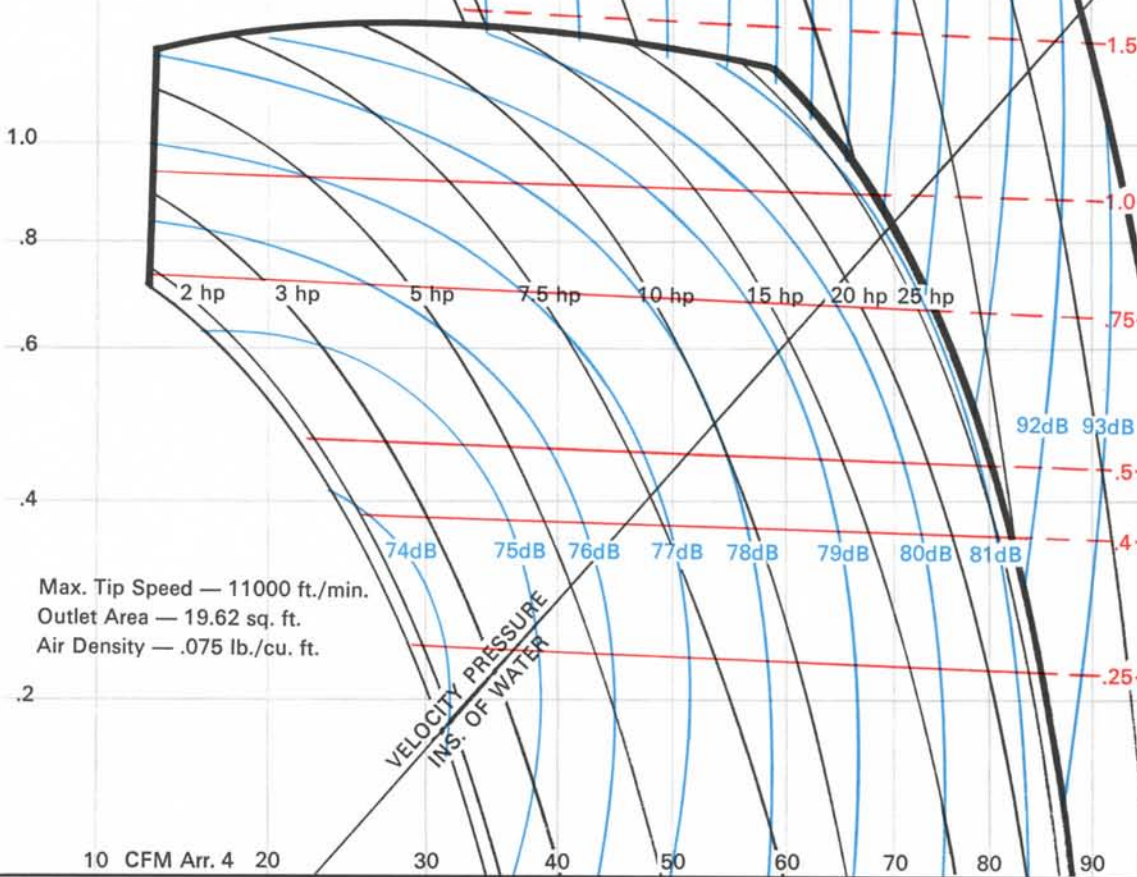
# VANE AXIAL

Belt Driven Fan — Arr. 9  
Static Pressure — Ins. W.G.  
(Applies to Single Stage Only)

Fan Static Pressure — Ins. W.G. — Arr. 4

Fan Static Pressure — Ins. W.G. — Arr. 4

Belt Driven Fan — Arr. 9  
Static Pressure — Ins. W.G.  
(Applies to Single Stage Only)



Max. Tip Speed — 11000 ft./min.  
Outlet Area — 19.62 sq. ft.  
Air Density — .075 lb./cu. ft.

VELOCITY PRESSURE  
INS. OF WATER

10 CFM Arr. 4 20 30 40 50 60 70 80 90  
INLET VOLUME — 1000's of CFM

600 rpm  
620 rpm  
640 rpm  
660 rpm  
680 rpm  
700 rpm

700 rpm  
680 rpm  
660 rpm  
640 rpm  
620 rpm  
600 rpm

TABLE 1 HP/SPEED CORRECTION CHART

600						
620						
640						
660						
680						
700						
	0	2	5	10	15	20
		2 hp	5 hp	10 hp	15 hp	20 hp
						25 hp

TABLE 2 Sound Level Correction for Speed

	700	680	660	640	620	600
dB	0	-1	-1	-2	-3	-4

The performance chart has been arranged to provide ratings for both Direct-driven and Belt driven, Tube and Vaneaxial fans. For details of a sample selection method refer to page 6.

NB: Belt Driven Ratings Corrected for Belt Guard Losses  
The range of performance is obtained by variations in number of blades and blade angle, the actual values of which are chosen by our Sales office on receipt of a specific duty.

The fan horsepower contours relate to the HP taken by each impeller, and for contra-rotating fans shown in the upper envelope give the maximum HP taken by each stage. The contours of sound level relate to the average Sound Pressure Level (Lp) in dB, re .0002 dynes/cm<sup>2</sup>. The corresponding Sound Power Level (Lw) re 10<sup>-12</sup> watts is 24 dB higher.

TABLE 3 Octave Band Mid frequency

	cps	63	125	250	500	1000	2000	4000	8000
Spectrum	dB	-6	-5	-6	-7	-9	-12	-20	-26

# TUBE AXIAL

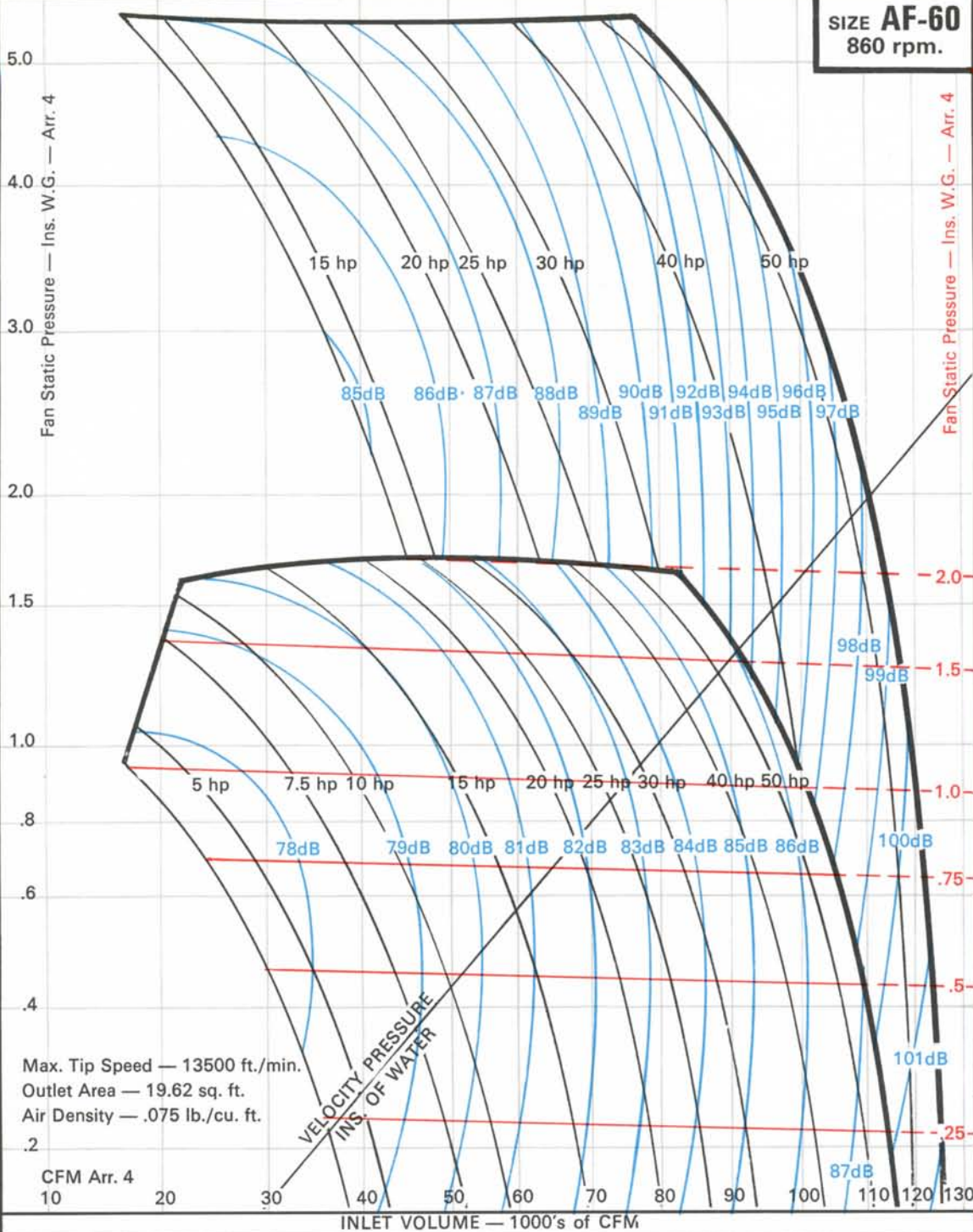
SP Regain using Outlet Cone — Ins. wg.

.1 .2 .3 .4 .5 .6 .7

SIZE **AF-60**  
860 rpm.

# VANE AXIAL

Belt Driven Fan — Arr. 9  
Static Pressure — Ins. W.G.  
(Applies to Single Stage Only)



Belt Driven Fan — Arr. 9  
Static Pressure — Ins. W.G.  
(Applies to Single Stage Only)

860 rpm  
830 rpm  
800 rpm  
770 rpm  
740 rpm  
710 rpm



860 rpm  
830 rpm  
800 rpm  
770 rpm  
740 rpm  
710 rpm

TABLE 1 HP/SPEED CORRECTION CHART

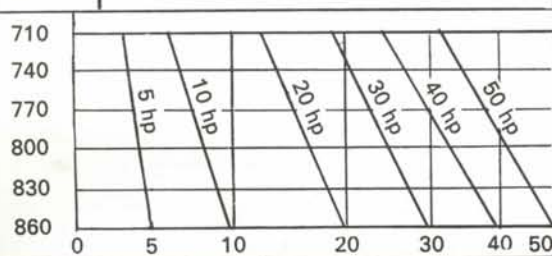


TABLE 2

Sound Level Correction for Speed	860	830	800	770	740	710
dB	0	-1	-1	-2	-3	-4

The performance chart has been arranged to provide ratings for both Direct-driven and Belt driven, Tube and Vaneaxial fans. For details of a sample selection method refer to page 6.

NB: Belt Driven Ratings Corrected for Belt Guard Losses

The range of performance is obtained by variations in number of blades and blade angle, the actual values of which are chosen by our Sales office on receipt of a specific duty.

The fan horsepower contours relate to the HP taken by each impeller, and for contra-rotating fans shown in the upper envelope give the maximum HP taken by each stage. The contours of sound level relate to the average Sound Pressure Level (Lp) in dB, re .0002 dynes/cm<sup>2</sup>. The corresponding Sound Power Level (Lw) re 10<sup>-12</sup> watts is 24 dB higher.

TABLE 3

Octave Band Mid frequency	cps	63	125	250	500	1000	2000	4000	8000
Spectrum	dB	-6	-5	-6	-7	-9	-12	-20	-26

# TUBE AXIAL

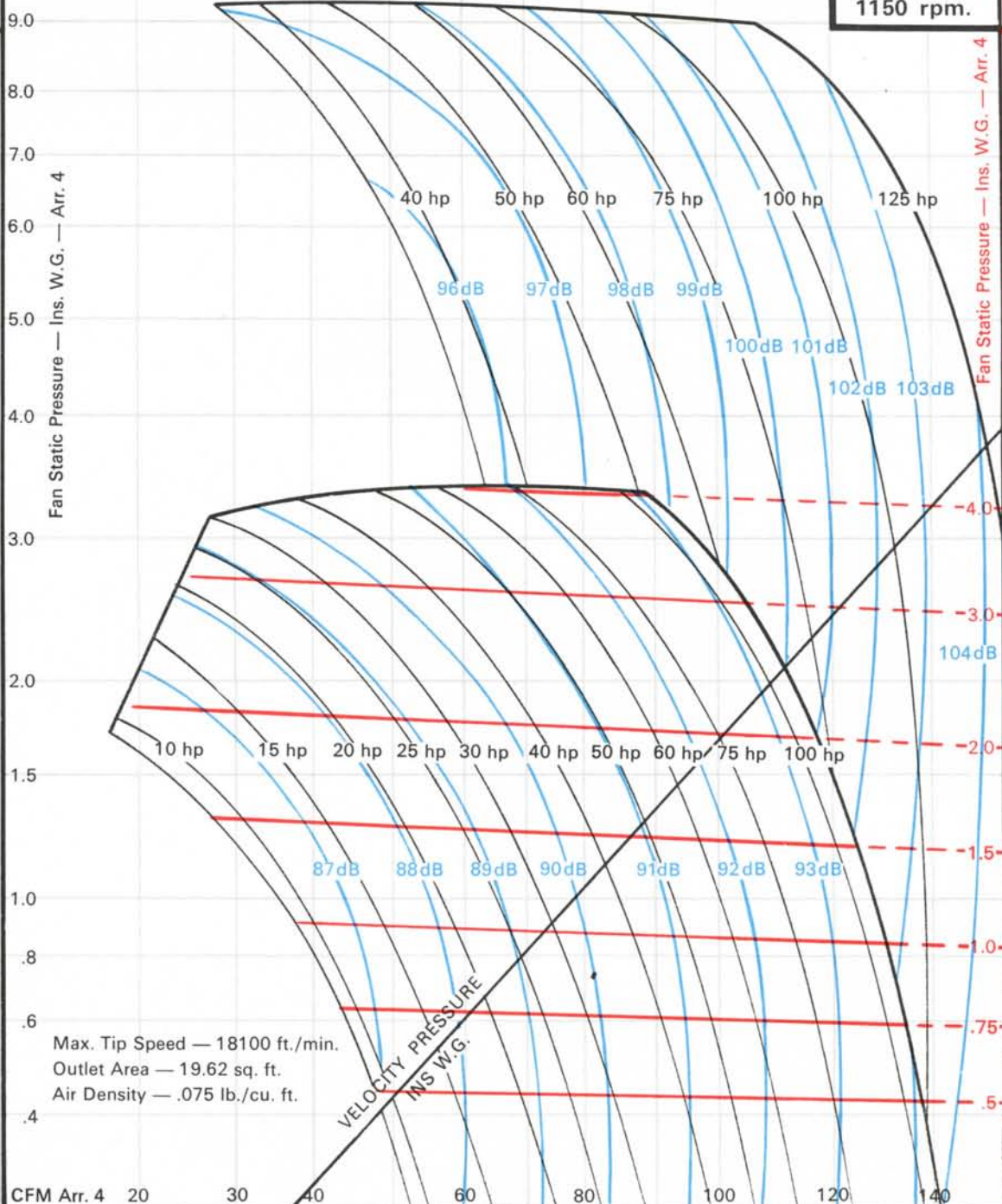
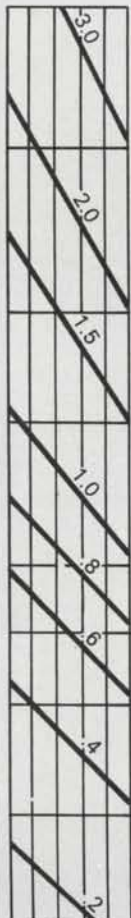
SP Regain using Outlet Cone — Ins. wg. .1 .2 .3 .4 .5 .6 .7 .8 .9

SIZE **AF-60**  
1150 rpm.

# VANE AXIAL

Belt Driven Fan — Arr. 9  
Static Pressure — Ins. W.G.  
(Applies to Single Stage Only)

Belt Driven Fan — Arr. 9  
Static Pressure — Ins. W.G.  
(Applies to Single Stage Only)



Max. Tip Speed — 18100 ft./min.  
Outlet Area — 19.62 sq. ft.  
Air Density — .075 lb./cu. ft.

VELOCITY PRESSURE  
INS W.G.

900 rpm  
950 rpm  
1000 rpm  
1050 rpm  
1100 rpm  
1150 rpm

1150 rpm  
1100 rpm  
1050 rpm  
1000 rpm  
950 rpm  
900 rpm

**TABLE 1** HP/SPEED CORRECTION CHART

	20 hp	40 hp	60 hp	80 hp	100 hp	120 hp	140 hp
900							
950							
1000							
1050							
1100							
1150							

**TABLE 2**

Sound Level Correction for Speed	1150	1100	1050	1000	950	900
dB	0	-1	-2	-3	-4	-5

The performance chart has been arranged to provide ratings for both Direct-driven and Belt driven, Tube and Vaneaxial fans. For details of a sample selection method refer to page 6.  
NB : Belt Driven Ratings Corrected for Belt Guard Losses  
The range of performance is obtained by variations in number of blades and blade angle, the actual values of which are chosen by our Sales office on receipt of a specific duty.  
The fan horsepower contours relate to the HP taken by each impeller, and for contra-rotating fans shown in the upper envelope give the maximum HP taken by each stage. The contours of sound level relate to the average Sound Pressure Level (Lp) in dB, re .0002 dynes/cm<sup>2</sup>. The corresponding Sound Power Level (Lw) re 10<sup>-12</sup> watts is 24 dB higher.

**TABLE 3**

Octave Band Mid frequency	cps	63	125	250	500	1000	2000	4000	8000
Spectrum	dB	-12	-8	-5	-7	-8	-12	-18	-25